

# GREENLAWN TOWNS



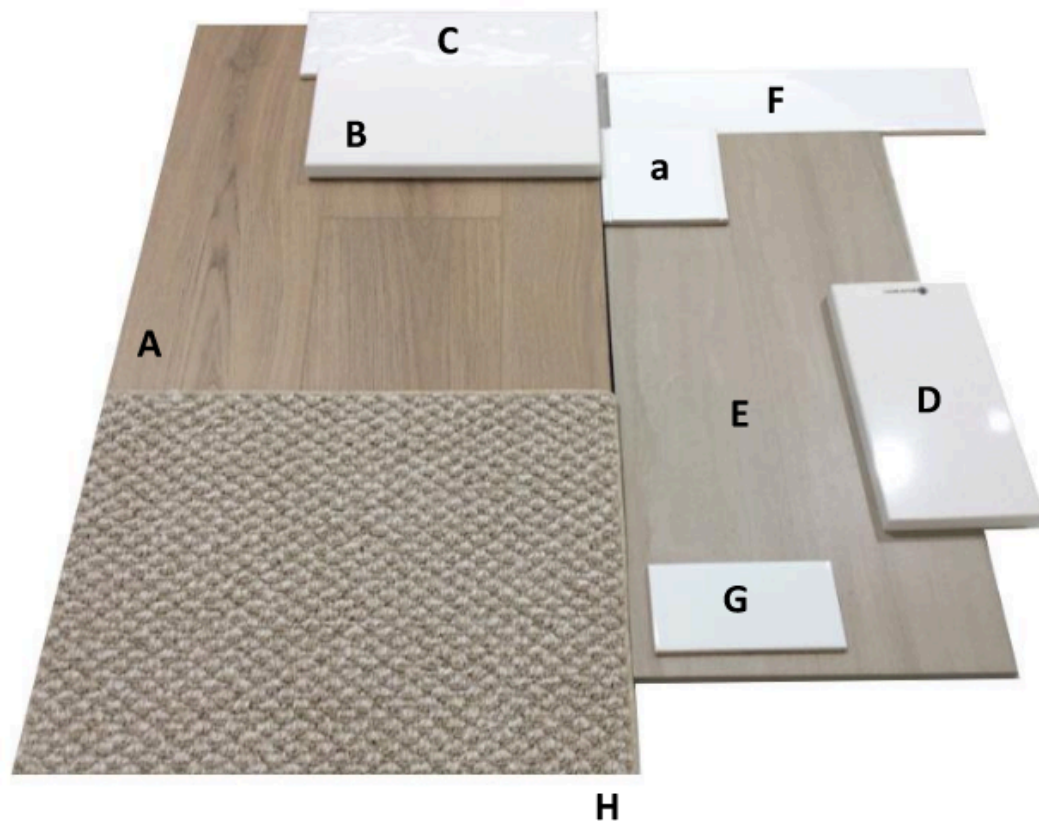
## SELECTIONS CATALOG



*Premier Collection*



# PREMIER COLLECTION - WARM - SEA SALT



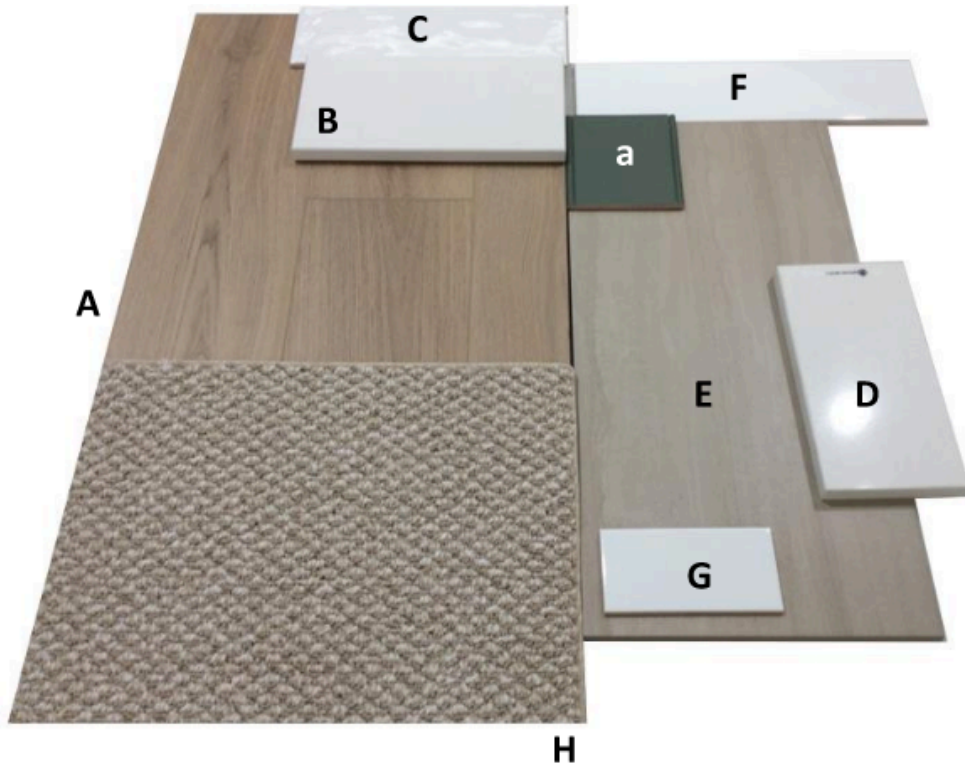
- A. EVP: LEGACY CORNERSTONE / COLOR: SUN RIVER TAN (INCLUDES LL BATH 3 FLOOR)
- B. KITCHEN COUNTERTOP: SILESTONE MIAMI VENA 3CM
- C. KITCHEN BACKSPLASH: MYTHOLOGY UNDULATED 4X12 SANTORINI MY90
- D. BATH COUNTERTOPS: MSI SNOW WHITE 2CM W/ 4" SLAB SPLASH AT BATHS
- E. FLOOR TILE @ UL BATHS & LAUNDRY: AVERY 12X24 BEIGE
- F. PRIMARY BATH WALL TILE: CATCH 4X16 ICE GLOSS
- G. SECONDARY BATH WALL TILE: CATCH 3X6 ICE GLOSS
- H. CARPET - LOOP: ECLIPTIC DW314/ COLOR: IVORY COAST 2143

a. CABINETS THROUGHOUT: SEA SALT PAINT

#### PAINT OPTIONS:

- SW PURE WHITE 7005
- SW AESTHETIC WHITE 7035
- SW ACCESSIBLE BEIGE 7036

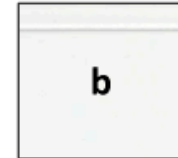
# PREMIER COLLECTION- WARM - EUCALYPTUS/SEA SALT



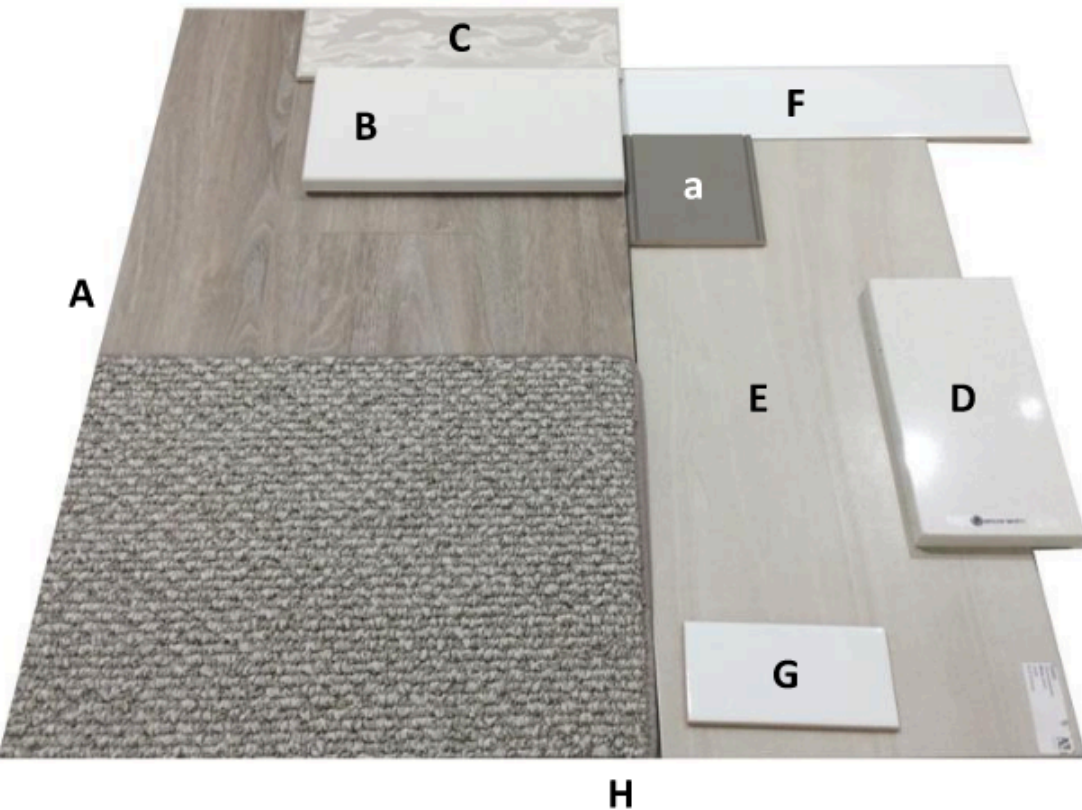
- A. EVP: LEGACY CORNERSTONE / COLOR: SUN RIVER TAN (INCLUDES LL BATH 3 FLOOR)
- B. KITCHEN COUNTERTOP: SILESTONE MIAMI VENA 3CM
- C. KITCHEN BACKSPLASH: MYTHOLOGY UNDULATED 4X12 SANTORINI MY90
- D. BATH COUNTERTOPS: MSI SNOW WHITE 2CM W/ 4" SLAB SPLASH AT BATHS
- E. FLOOR TILE @ UL BATHS & LAUNDRY: AVERY 12X24 BEIGE
- F. PRIMARY BATH WALL TILE: CATCH 4X16 ICE GLOSS
- G. SECONDARY BATH WALL TILE: CATCH 3X6 ICE GLOSS
- H. CARPET - LOOP: ECLIPTIC DW314/ COLOR: IVORY COAST 2143

- a. CABINETS @ KITCHEN: EUCALYPTUS PAINT
- b. CABINETS @ BATHS: SEA SALT PAINT (WHITE)

PAINT OPTIONS :  
SW PURE WHITE 7005  
SW AESTHETIC WHITE 7035  
SW ACCESSIBLE BEIGE 7036



# PREMIER COLLECTION - NEUTRAL



- A. EVP: LEGACY PROGRESS / COLOR: SHADOW (INCLUDES LL BATH 3 FLOOR)
- B. KITCHEN COUNTERTOP: SILESTONE MIAMI VENA 3CM
- C. KITCHEN BACKSPLASH: MYTHOLOGY UNDULATED 4X12 OLYMPUS MY91
- D. BATH COUNTERTOPS: MSI SNOW WHITE 2CM W/ 4" SLAB SPLASH AT BATHS
- E. FLOOR TILE @ UL BATHS & LAUNDRY: AVERY 12X24 WHITE
- F. PRIMARY BATH WALL TILE: CATCH 4X16 ICE GLOSS
- G. SECONDARY BATH WALL TILE: CATCH 3X6 ICE GLOSS
- H. CARPET - LOOP: ECLIPTIC DW314/ COLOR: PEARL GLACIER 2365

a. CABINETS THROUGHOUT: FRAPPE PAINT

## PAINT OPTIONS :

- SW PURE WHITE 7005
- SW DRIFT OF MIST 9166
- SW AGREEABLE GRAY 7029

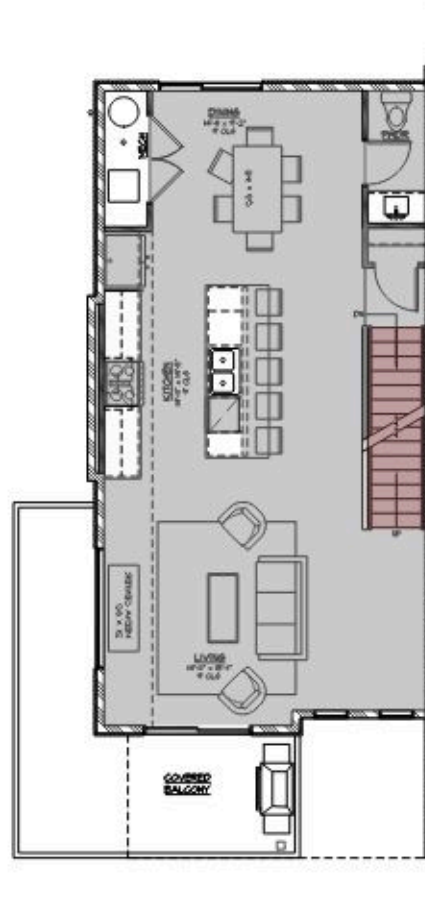
# FLOOR BREAK

FLOOR BREAK (SUMMIT)

UPGRADED FLOORING



THIRD LEVEL



SECOND LEVEL



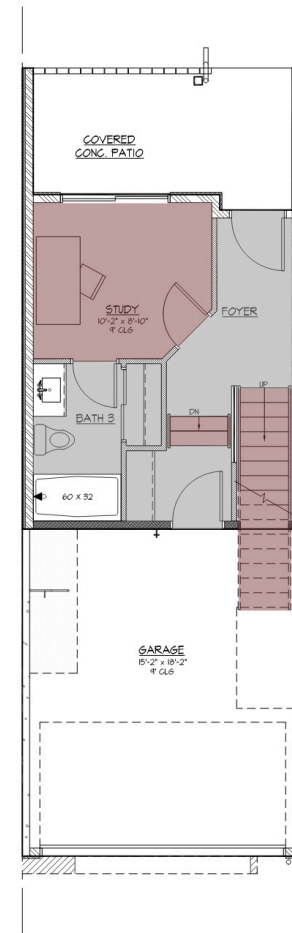
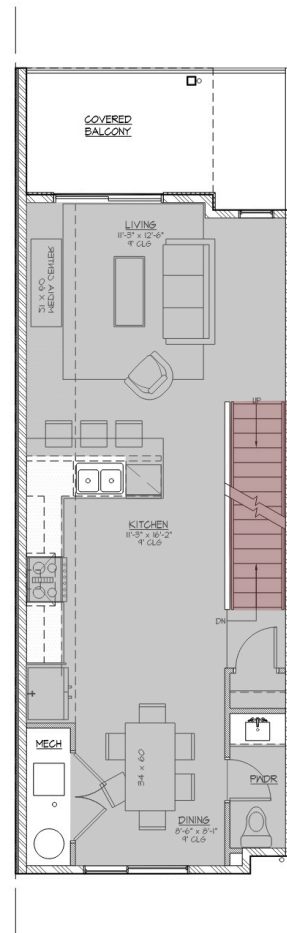
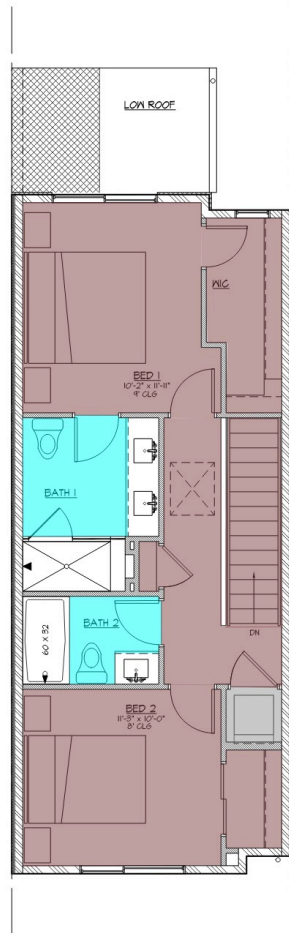
FIRST LEVEL

# FLOOR BREAK

FLOOR BREAK (HAVEN)

UPGRADED FLOORING

Description
Carpet
LVT
Tile

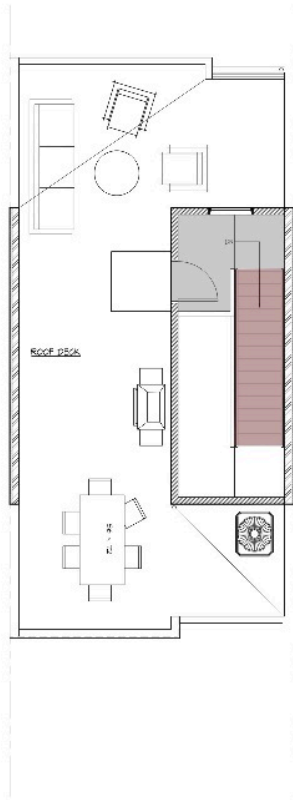


# FLOOR BREAK

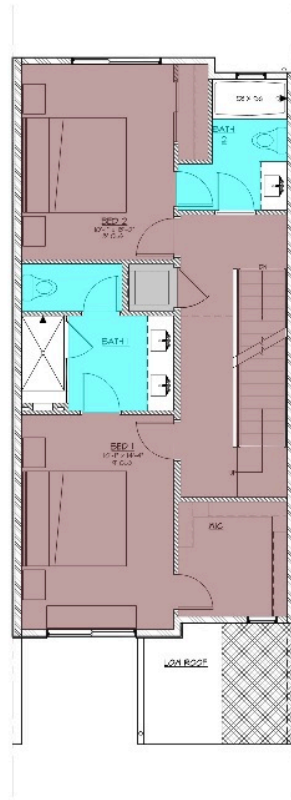
FLOOR BREAK (VUE)

UPGRADED FLOORING

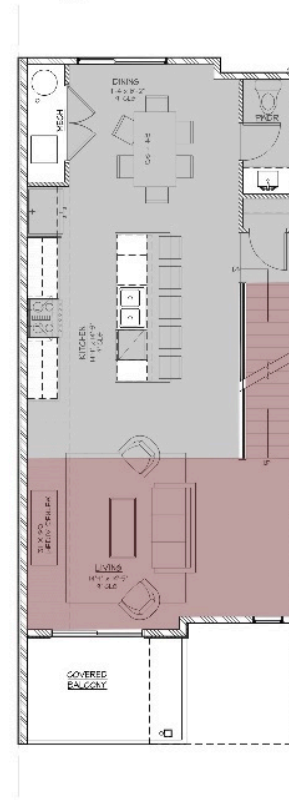
Description
Carpet
LVT
Tile



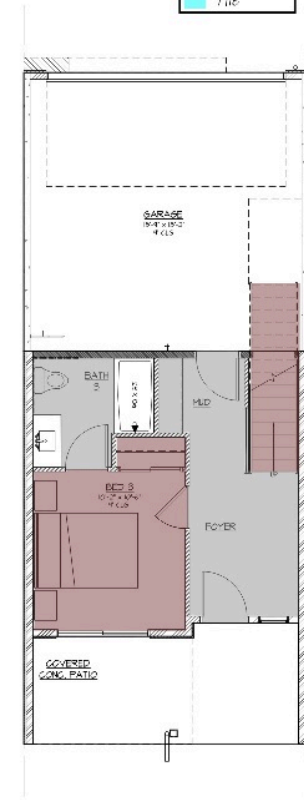
ROOF



THIRD LEVEL



SECOND LEVEL

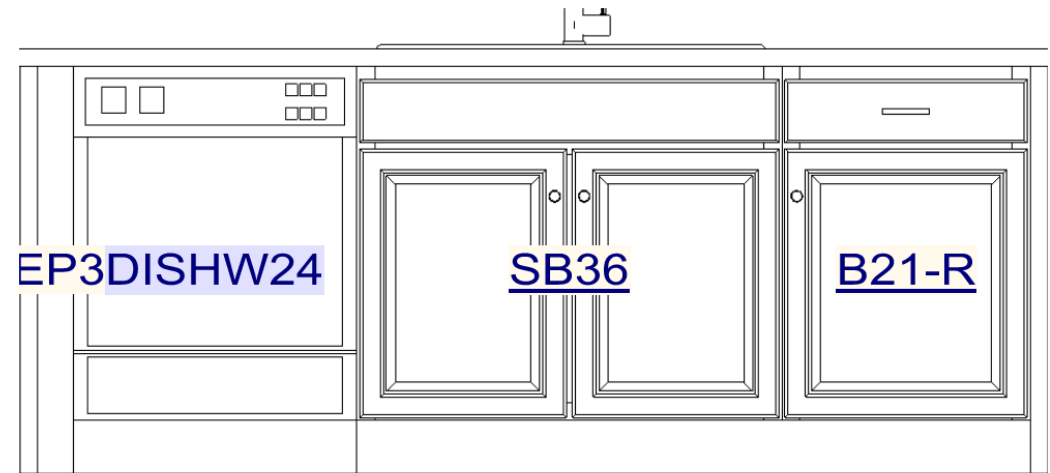


FIRST LEVEL

# KITCHEN LAYOUT

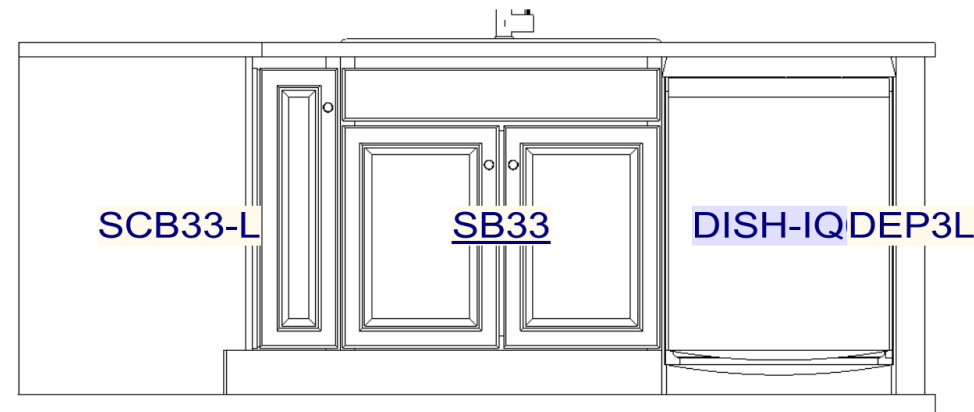
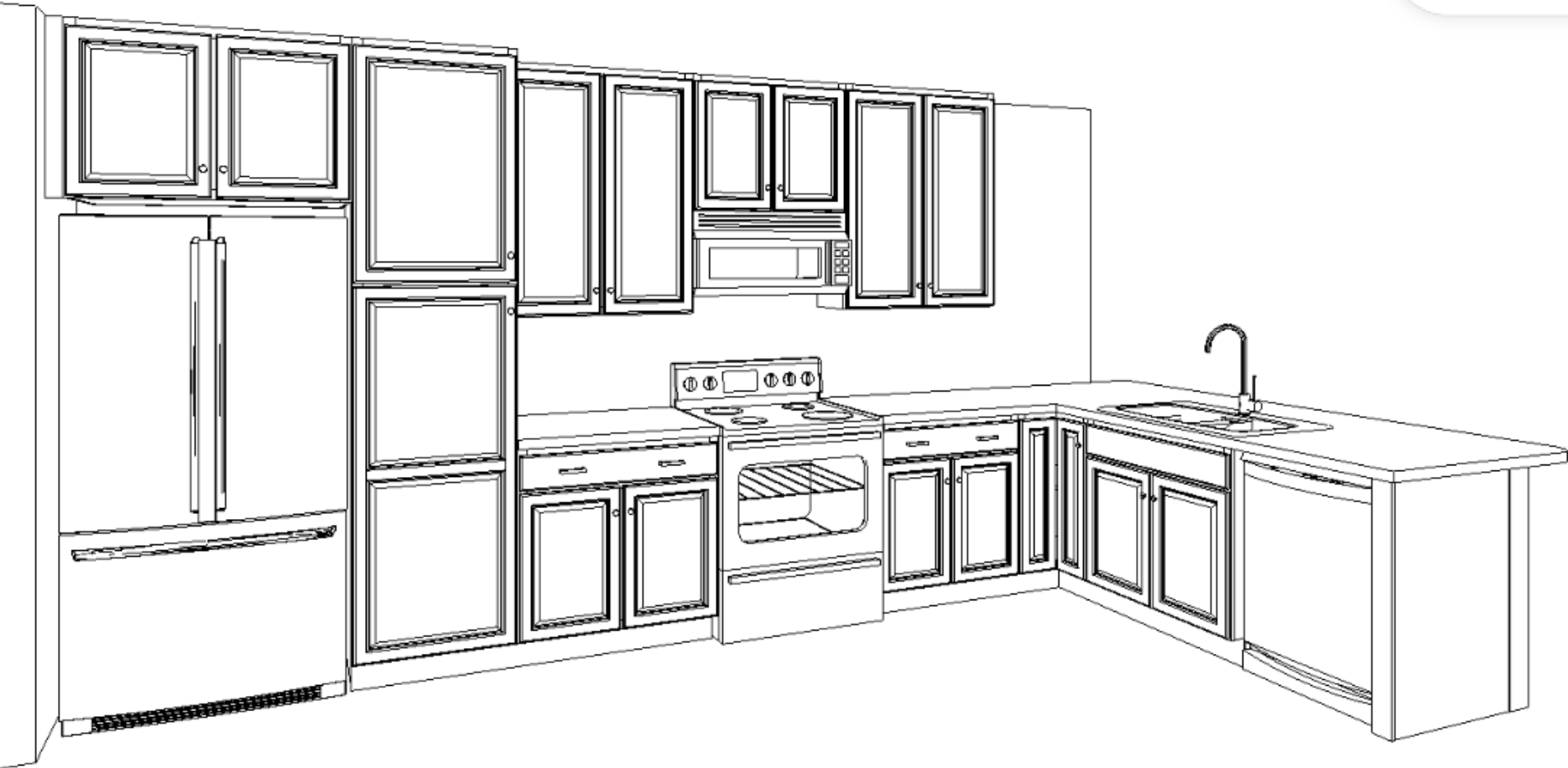


## ISLAND LAYOUT



Summit & vue

# KITCHEN LAYOUT

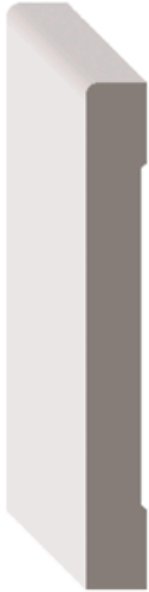


Haven

# INTERIOR TRIM AND DOORS



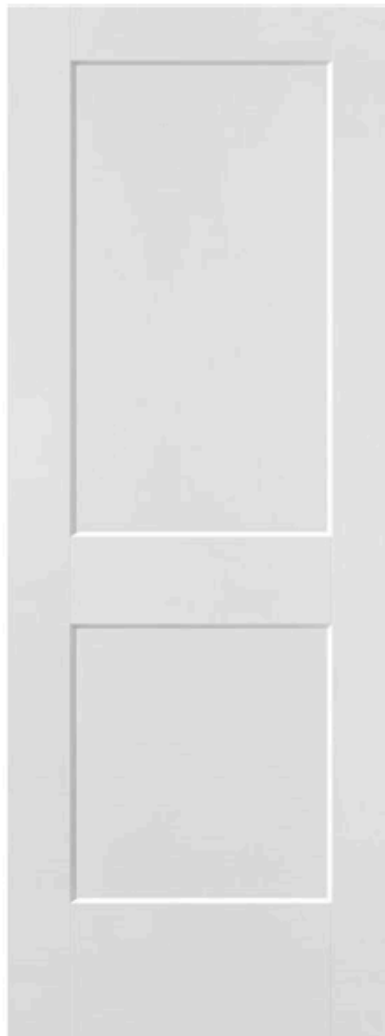
CASING



BASEBOARD

Logan

NEW  
Logan<sup>™</sup>  
HERITAGE<sup>®</sup>  
SERIES



LOGAN, HERITAGE SERIES DOORS, HOLLOW  
CORE (6'8''')

5-1/4" BASEBOARD WITH 3-1/4" CASING

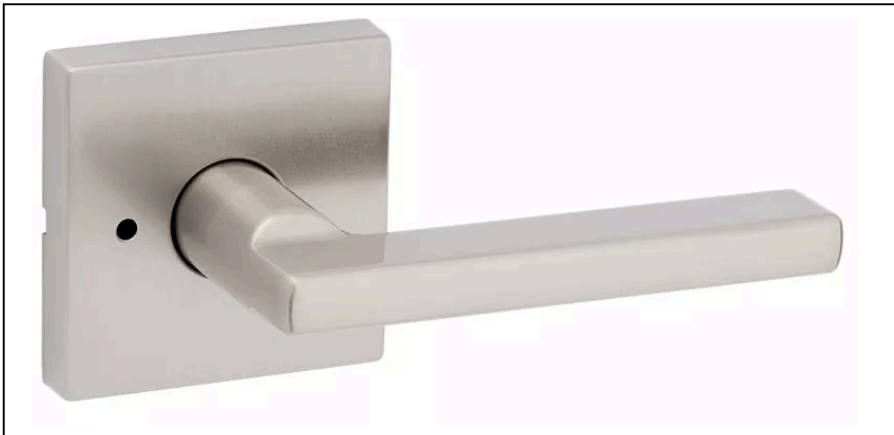
# INTERIOR DOOR HARDWARE PACKAGE



UPGRADE - WARM - SEA SALT

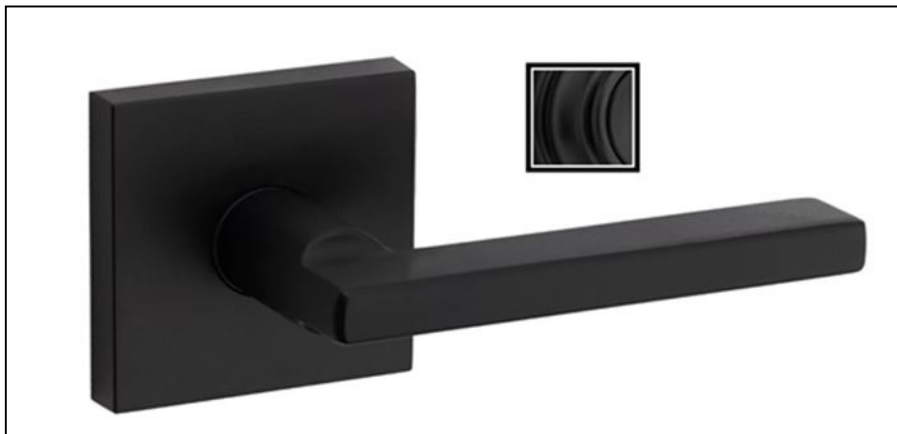
**Kwikset**

HALIFAX LEVER (SQUARE)



FINISH: BRUSHED NICKEL

UPGRADE - EUCALYPTUS/SEA SALT AND NEUTRAL



FINISH: IRON BLACK

# EXTERIOR DOOR HARDWARE—FRONT DOOR STANDARD PACK

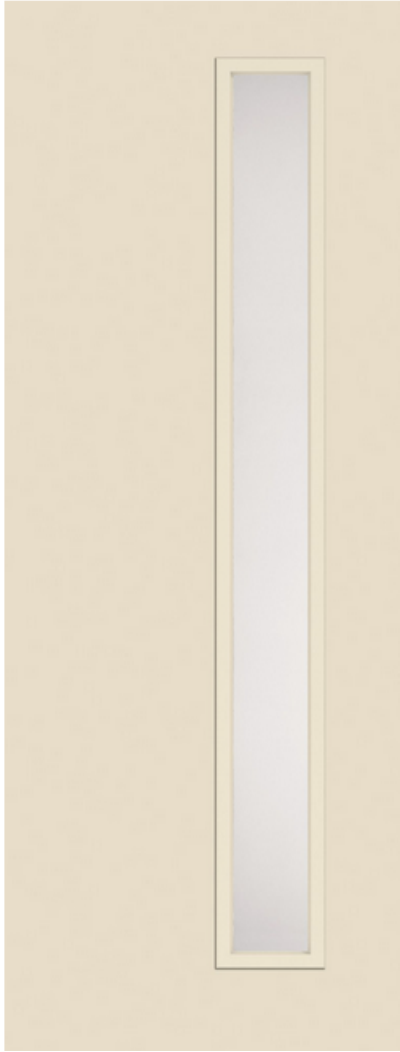


***Kwikset***

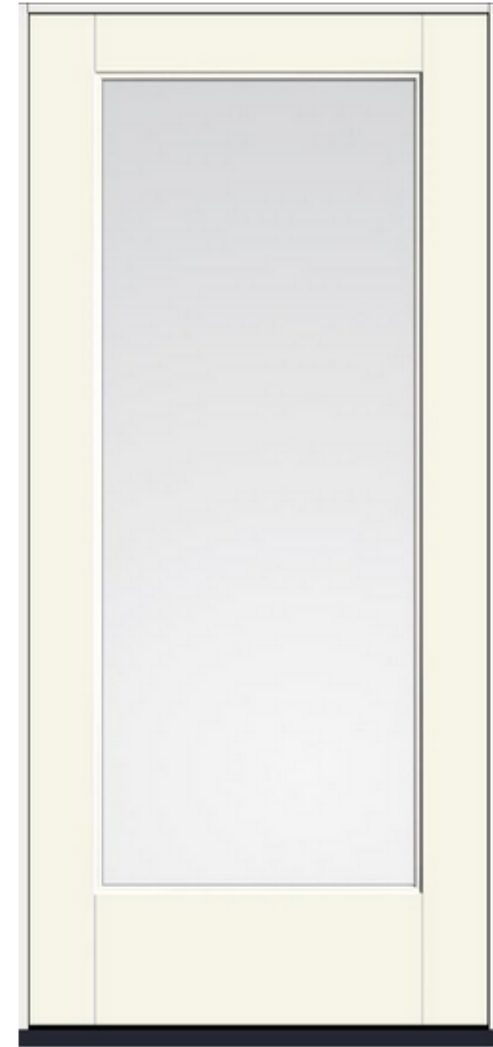
SAN CLEMENTE HANDLESET WITH HALIFAX  
LEVER - DEADBOLT KEYED  
ONE SIDE - FEATURING SMARTKEY

FINISH: IRON BLACK

# ENTRANCE DOOR AND ROOFTOP DOOR



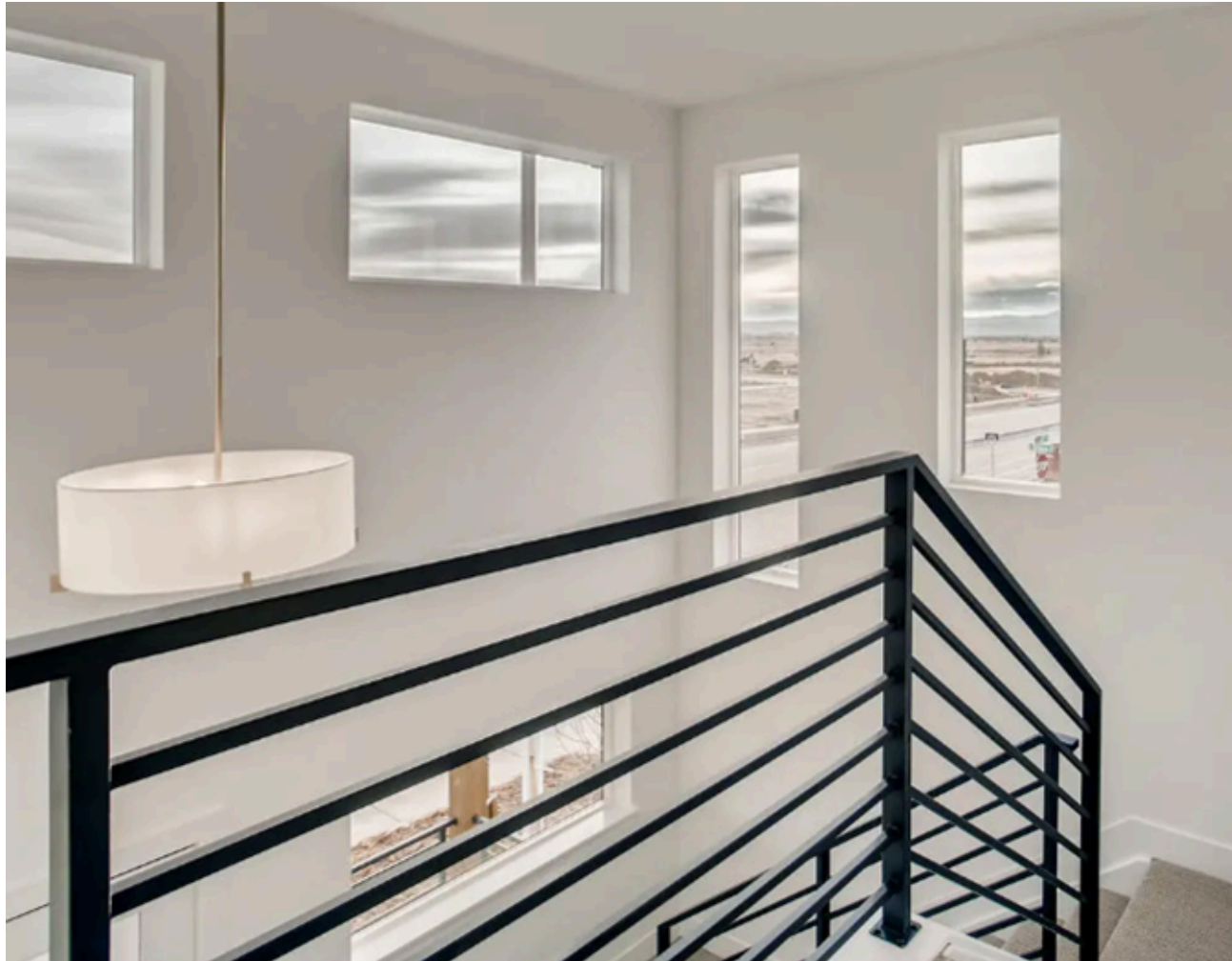
8'-0" x 3'-0" NARROW LIGHT DOOR  
ENTRANCE



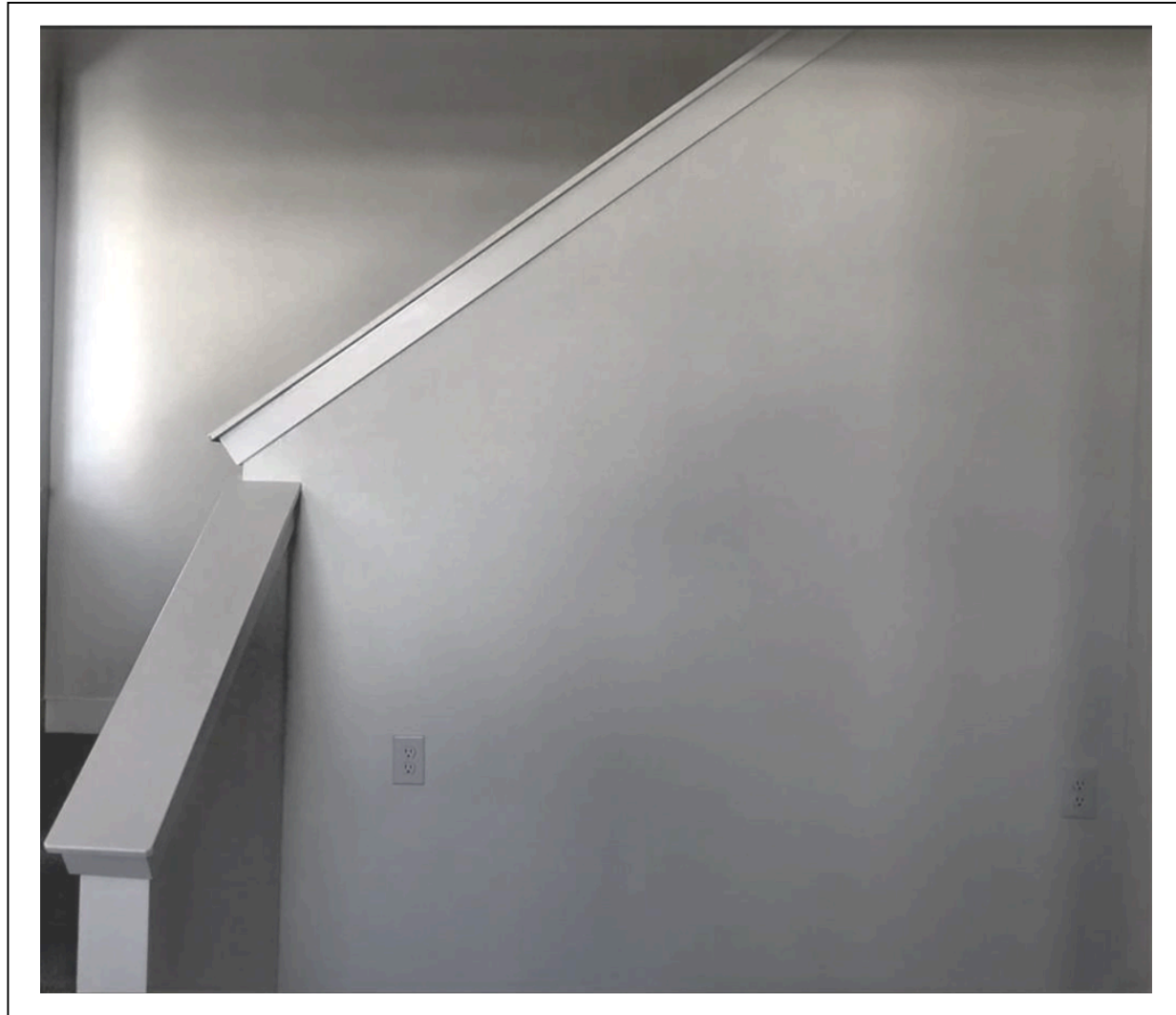
ROOFTOP



# INTERIOR METAL RAILING - 1ST AND 2ND FLOOR



# HALF WALL WITH MDF CAP - 3RD FLOOR



# INTERIOR TRIM —BUILT IN BENCH



Color to match kitchen island  
cabinets

# BATH FINISH PACKAGE - WARM



**Moen** Genta LX Single Handle Centerset Bathroom Faucet with Duralast Valve Technology and...  
Model: 6702



**Moen** Genta LX Shower Only Trim Package with 1.75 GPM Multi Function Shower Head  
Model: UT2472EPBN



**Moen** Genta LX Tub and Shower Trim Package with 1.75 GPM Multi Function Shower...  
Model: UT2473EPBN



**Moen** Genta LX Wall Mounted Pivoting Toilet Paper Holder  
Model: BH3808BN



**Moen** Genta LX Single Robe Hook  
Model: BH3803BN



**Moen** Genta LX Double Post Wall Mounted Towel Bar  
Model: BH3886BN



**Moen** Genta LX 24" Towel Bar  
Model: BH3824BN

# BATH FINISH PACKAGE - WARM EUCALYPTUS/SEA SALT AND M



## GENTA - MATTE BLACK



**Moen** Genta LX Single Handle Centerset Bathroom Faucet with Duralast Valve Technology and...  
Model: **6702**



**Moen** Genta LX Shower Only Trim Package with 1.75 GPM Multi Function Shower Head  
Model: **UT2472EPBL**



**Moen** Genta LX Tub and Shower Trim Package with 1.75 GPM Multi Function Shower...  
Model: **UT2473EPBL**



**Moen** Genta LX Wall Mounted Pivoting Toilet Paper Holder  
Model: **BH3808BL**



**Moen** Genta LX Single Robe Hook  
Model: **BH3803BL**



**Moen** Genta LX Double Post Wall Mounted Towel Bar  
Model: **BH3886BL**



**Moen** Genta LX 24" Towel Bar  
Model: **BH3824BL**

# PRIMARY SUITE BATH SHOWER DOOR



WARM SEA SALT



Brushed  
Nickel

WARM EUCALYPTUS/SEA SALT AND NEUTRAL



Black

\* Euro-style tubular 6" push-pull handle mounted through glass



# KITCHEN FAUCET



WARM SEA SALT



**POLISHED NICKEL**  
**MODEL#: 7770SRS**

WARM EUCALYPTUS/SEA SALT - NEUTRAL



**BLACK**  
**MODEL#: 7770BL**

**SMYTH – SPOT RESISTANT STAINLESS**  
**ONE-HANDLE**  
**PULLDOWN KITCHEN FAUCET**

# EXTERIOR LIGHTING PACKAGES

## GARAGE AND SIDE EXTERIOR



**VENDOR #:** P550103-031-30  
**VENDOR:** PROGRESS LIGHTING  
**FINISH:** MATTE BLACK  
**COLLECTION:** 6IN CYL RNDs  
**WIDTH:** 6  
**HEIGHT:** 12  
**LENGTH:** 8.94  
**# OF BULBS:** 1  
**WATTAGE:** 32 W

## PATIO EXTERIOR



**VENDOR #:** P5674-31/30K  
**VENDOR:** PROGRESS LIGHTING  
**FINISH:** BLACK  
**COLLECTION:** LED CYLINDERS  
**WIDTH:** 5  
**HEIGHT:** 7.5  
**LENGTH:** 8  
**# OF BULBS:** 1  
**WATTAGE:** 16.9 W

# INTERIOR LIGHTING PACKAGE - WARM SEA SALT

BRUSHED NICKEL AND BLACK



## BATHROOM



## BEDROOM



## KITCHEN ISLAND



**VENDOR #:** 52102SN  
**VENDOR:** MAXIM  
**FINISH:** SATIN NICKEL  
**COLLECTION:** RAIL  
**WIDTH:** 24  
**HEIGHT:** 4.75  
**LENGTH:** 24  
**# OF BULBS:** 1  
**WATTAGE:** 16 W

**VENDOR #:** M60019BN  
**VENDOR:** MERIDIAN  
**FINISH:** BRUSHED NICKEL  
**COLLECTION:** MFLUS  
**WIDTH:** 13  
**HEIGHT:** 4  
**LENGTH:** 13  
**# OF BULBS:** 2  
**WATTAGE:** 60 W

**PRODUCT ID:** 0069868  
**VENDOR #:** 814-5L-MB-PN  
**VENDOR:** Z-LITE  
**FINISH:** MATTE BLACK / POLISHED NICKEL  
**COLLECTION:** CALUMET  
**WIDTH:** 5  
**HEIGHT:** 8  
**LENGTH:** 38  
**# OF BULBS:** 5  
**WATTAGE:** 35 W  
**RODS:** 4X24`` + 2X12`` + 1X6`` + 1X3``



DECORA SWITCHES

# INTERIOR LIGHTING PACKAGES - WARM EUCALYPTUS/SL.

## BATHROOM



**VENDOR #:** 52102BK  
**VENDOR:** MAXIM  
**FINISH:** BLACK  
**COLLECTION:** RAIL  
**WIDTH:** 24  
**HEIGHT:** 4.75  
**LENGTH:** 24  
**# OF BULBS:** 1  
**WATTAGE:** 16 W

## GOLD AND BLACK

## BEDROOM



**VENDOR #:** M60019NB  
**VENDOR:** MERIDIAN  
**FINISH:** NATURAL BRASS  
**COLLECTION:** MFLUS  
**WIDTH:** 13  
**HEIGHT:** 4  
**LENGTH:** 13  
**# OF BULBS:** 2  
**WATTAGE:** 60 W

## KITCHEN ISLAND



**PRODUCT ID:** 0069862  
**VENDOR #:** 814-5L-MB-OB  
**VENDOR:** Z-LITE  
**FINISH:** MATTE BLACK / OLDE BRASS  
**COLLECTION:** CALUMET  
**WIDTH:** 5  
**HEIGHT:** 8  
**LENGTH:** 38  
**# OF BULBS:** 5  
**WATTAGE:** 35 W  
**RODS:** 4X24`` + 2X12`` + 1X6`` + 1X3``



DECORA SWITCHES

# APPLIANCE PACKAGES

RANGE



**MODEL#: JBS360DMBB**  
**GE® 30" FREE-STANDING ELECTRIC RANGE**

DISHWASHER



**MODEL#: GDF535PGRBB**  
**GE® DISHWASHER WITH FRONT CONTROLS**

MICROWAVE



**MODEL#: JVM3160DFBB**  
**GE® 1.6 CU. FT. OVER-THE-RANGE MICROWAVE OVEN**



# APPLIANCE - REFRIGERATOR



REFRIGERATOR NOT INCLUDED IN PACKAGE

# WATER HEATER



40 GALLON

# GARAGE DOOR OPENER AND KEYPAD



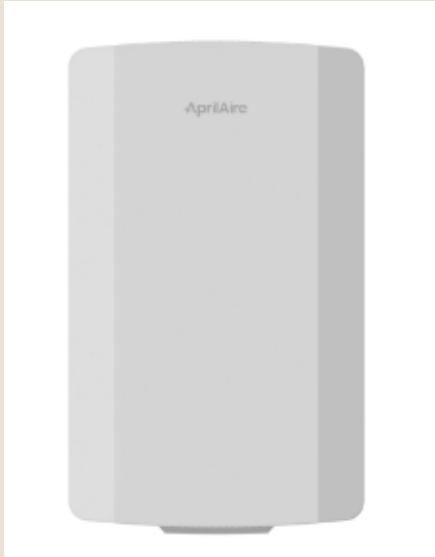
- Built-in Wi-Fi® allows for smartphone control with the myQ® app.
- Industrial-strength chain drive.
- Next generation garage technology: improved Wi-Fi connectivity and enhanced memory to support new myQ features and solutions.
- Integrated Bluetooth technology: reduces setup time and makes it even easier to connect to the myQ app, other myQ devices and smart home technology solutions.
- Works with Amazon Key: Enables convenient and secure In-Garage Delivery.
- myQ Diagnostics in the myQ app provides real-time insights for your garage door via the Health Report. Receive alerts and error codes in the app if an issue arises and connect with a professional for services if needed.

1/2 HP AC Chain Drive Wi-Fi® Garage Door Opener with Integrated Bluetooth Technology

**MODEL#: 83650-267**

# ZONE COMFORT SYSTEM

## 3-ZONE TEMPERATURE CONTROL



**MODEL#: 6403**

INCREASES COMFORT AND REDUCE ENERGY COSTS BY MAINTAINING CONSISTENT TEMPERATURES AND CLIMATE THROUGHOUT THE HOUSE



### Comfort

No more hot and cold spots.



### Convenience

Adjust temperature from multiple rooms.



### Energy Savings

Delivers conditioned air only when and where it's needed to maintain comfort.