

GREENLAWN TOWNS

SELECTIONS CATALOG



Signature Collection

M
MONTANO
HOMES

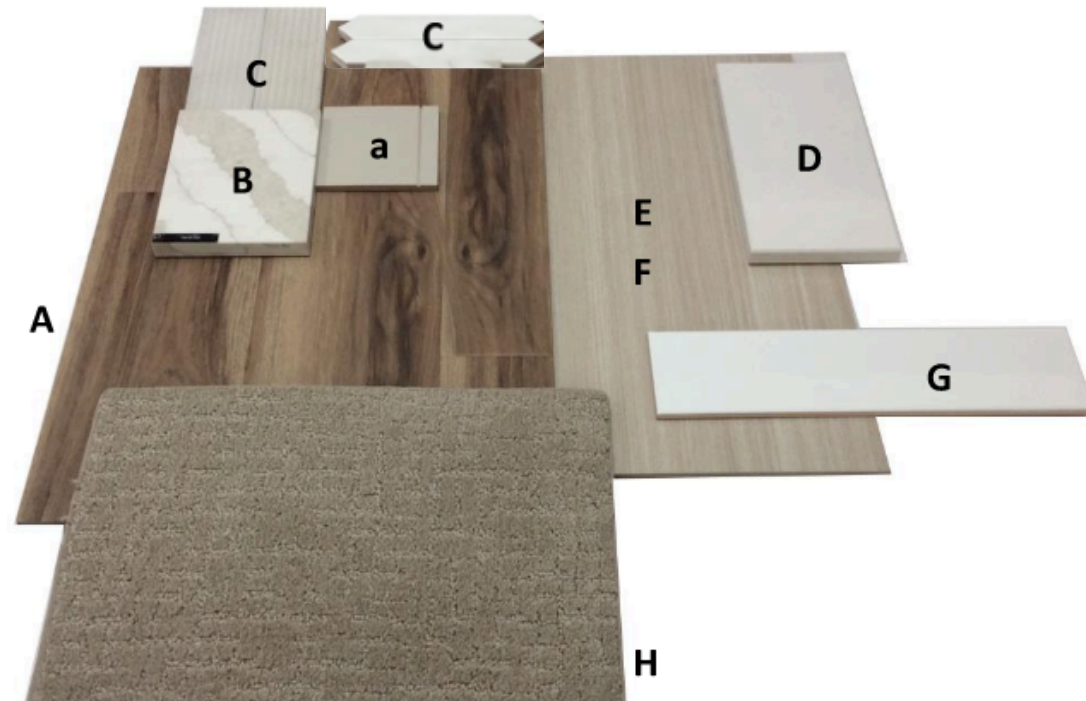
SIGNATURE - CHAI LATTE (NEUTRAL)



- A. EVP: ADURA MAX REGENCY OAK / COLOR: POLISHED PLATINUM (INCLUDES LL BATH 3 FLOOR)
- B. KITCHEN COUNTERTOP: PENTAL TERRA LUNA 3CM
- C. KITCHEN BACKSPLASH: RICE 3X8 RAKED BIANCO
- D. BATH COUNTERTOPS: SILESTONE MIAMI VENA 3CM W/ 4" SLAB SPLASH AT BATHS
- E. FLOOR TILE @ UL BATHS & LAUNDRY: LOUNGE 14 12X24 SPRITZER ULGR
- F. PRIMARY BATH WALL TILE: LOUNGE 14 12X24 SPRITZER ULGR
- G. SECONDARY BATH WALL TILE: CATCH 4X16 ICE GLOSS
- H. CARPET - PATTERNED: CLOSE KNIT DW285 / COLOR: SNOW CAP 6319
- C. KITCHEN BACKSPLASH: SPARK WHITE MATTE PICKET
- a. CABINETS THROUGHOUT: CHAI LATTE PAINT

PAINT OPTIONS :
SW PURE WHITE 7005
SW DRIFT OF MIST 9166
SW AGREEABLE GRAY 7029

SIGNATURE - CHAI LATTE (WARM)



- A. EVP: ADURA MAX PRESERVATION / COLOR: ARTIFACT (INCLUDES LL BATH 3 FLOOR)
- B. KITCHEN COUNTERTOP: PENTAL TERRA SOL 3CM
- C. KITCHEN BACKSPLASH: RICE 3X8 RAKED NATURAL
- D. BATH COUNTERTOPS: SILESTONE MIAMI VENA 3CM W/ 4" SLAB SPLASH AT BATHS
- E. FLOOR TILE @ UL BATHS & LAUNDRY: LOUNGE 14 12X24 COSMOPOLITAN ULGN
- F. PRIMARY BATH WALL TILE: LOUNGE 14 12X24 COSMOPOLITAN ULGN
- G. SECONDARY BATH WALL TILE: CATCH 4X16 ICE GLOSS
- H. CARPET - PATTERNED: CLOSE KNIT DW285 / COLOR: FIELDCREST 6001
- C. KITCHEN BACKSPLASH: SPARK IVORY MATTE PICKET
- a. CABINETS THROUGHOUT: CHAI LATTE PAINT

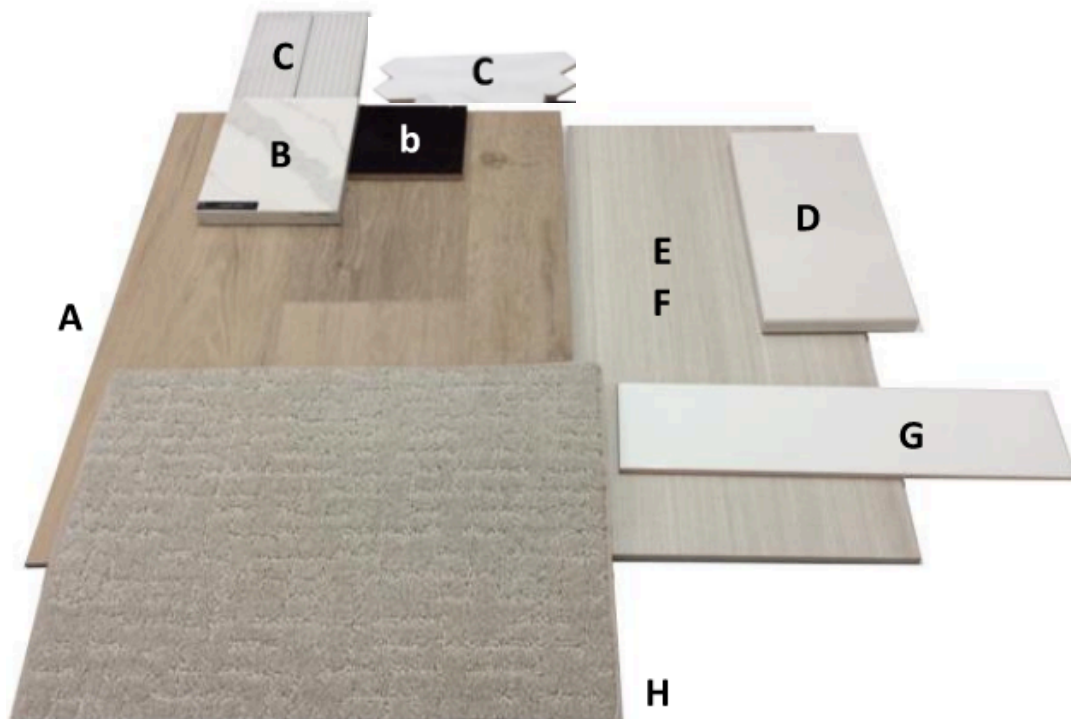
PAINT OPTIONS :

SW PURE WHITE 7005

SW AESTHETIC WHITE 7035

SW ACCESSIBLE BEIGE 7036

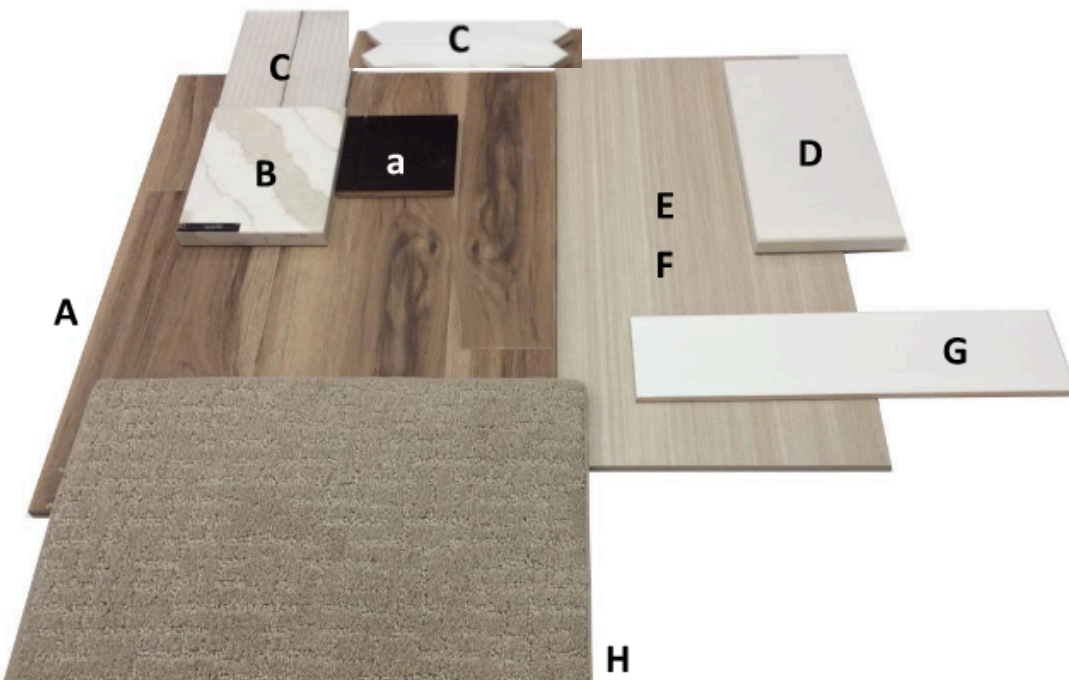
SIGNATURE - JAVA (NEUTRAL)



- A. EVP: ADURA MAX REGENCY OAK / COLOR: POLISHED PLATINUM (INCLUDES LL BATH 3 FLOOR)
- B. KITCHEN COUNTERTOP: PENTAL TERRA LUNA 3CM
- C. KITCHEN BACKSPLASH: RICE 3X8 RAKED BIANCO
- D. BATH COUNTERTOPS: SILESTONE MIAMI VENA 3CM W/ 4" SLAB SPLASH AT BATHS
- E. FLOOR TILE @ UL BATHS & LAUNDRY: LOUNGE 14 12X24 SPRITZER ULGR
- F. PRIMARY BATH WALL TILE: LOUNGE 14 12X24 SPRITZER ULGR
- G. SECONDARY BATH WALL TILE: CATCH 4X16 ICE GLOSS
- H. CARPET - PATTERNED: CLOSE KNIT DW285 / COLOR: SNOW CAP 6319
- C. KITCHEN BACKSPLASH: SPARK WHITE MATTE PICKET
- a. [CABINETS THROUGHOUT: JAVA STAIN](#)

PAINT OPTIONS :
SW PURE WHITE 7005
SW DRIFT OF MIST 9166
SW AGREEABLE GRAY 7029

SIGNATURE - JAVA (WARM)

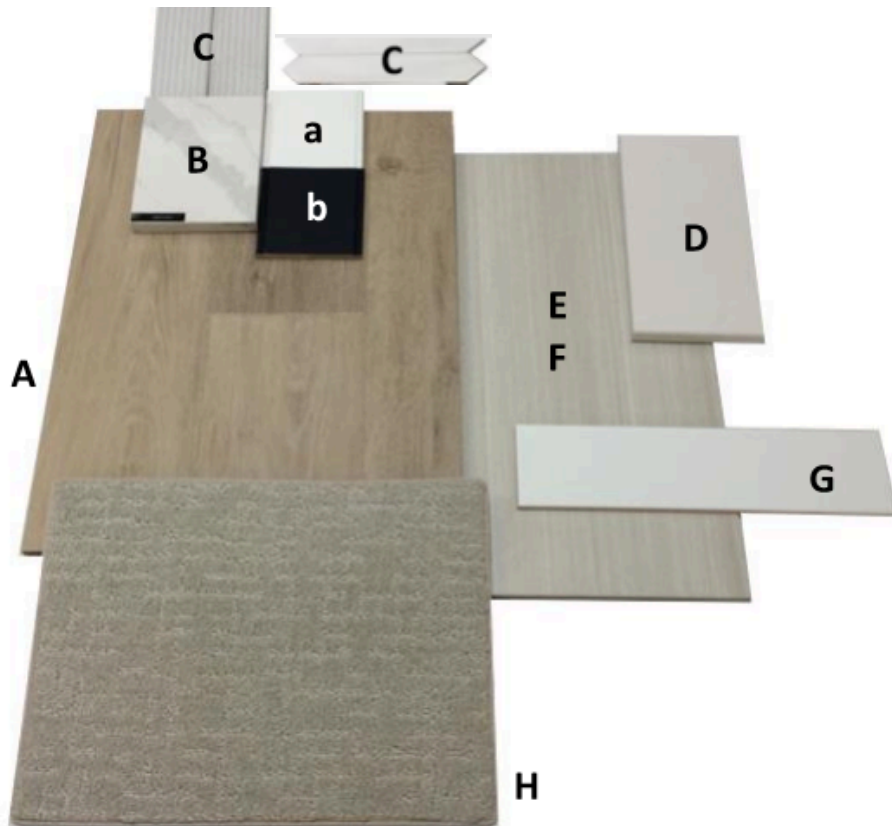


- A. EVP: ADURA MAX PRESERVATION / COLOR: ARTIFACT (INCLUDES LL BATH 3 FLOOR)
- B. KITCHEN COUNTERTOP: PENTAL TERRA SOL 3CM
- C. KITCHEN BACKSPLASH: RICE 3X8 RAKED NATURAL
- D. BATH COUNTERTOPS: SILESTONE MIAMI VENA 3CM W/ 4" SLAB SPLASH AT BATHS
- E. FLOOR TILE @ UL BATHS & LAUNDRY: LOUNGE 14 12X24 COSMOPOLITAN ULGN
- F. PRIMARY BATH WALL TILE: LOUNGE 14 12X24 COSMOPOLITAN ULGN
- G. SECONDARY BATH WALL TILE: CATCH 4X16 ICE GLOSS
- H. CARPET - PATTERNED: CLOSE KNIT DW285 / COLOR: FIELDCREST 6001
- C. KITCHEN BACKSPLASH: SPARK IVORY MATTE PICKET
- a. [CABINETS THROUGHOUT: JAVA STAIN](#)

PAINT OPTIONS :

- SW PURE WHITE 7005
- SW AESTHETIC WHITE 7035
- SW ACCESSIBLE BEIGE 7036

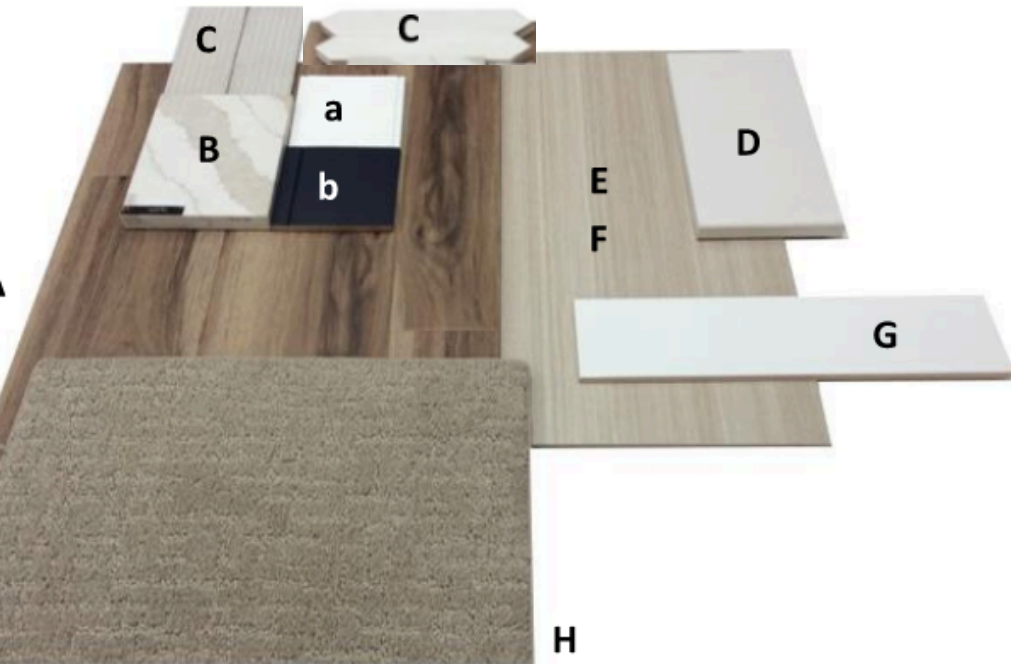
SIGNATURE - SEA SALT/CELESTE (NEUTRAL)



- A. EVP: ADURA MAX REGENCY OAK / COLOR: POLISHED PLATINUM (INCLUDES LL BATH 3 FLOOR)
- B. KITCHEN COUNTERTOP: PENTAL TERRA LUNA 3CM
- C. KITCHEN BACKSPLASH: RICE 3X8 RAKED BIANCO
- D. BATH COUNTERTOPS: SILESTONE MIAMI VENA 3CM W/ 4" SLAB SPLASH AT BATHS
- E. FLOOR TILE @ UL BATHS & LAUNDRY: LOUNGE 14 12X24 SPRITZER ULGR
- F. PRIMARY BATH WALL TILE: LOUNGE 14 12X24 SPRITZER ULGR
- G. SECONDARY BATH WALL TILE: CATCH 4X16 ICE GLOSS
- H. CARPET - PATTERNED: CLOSE KNIT DW285 / COLOR: SNOW CAP 6319
- C. KITCHEN BACKSPLASH: SPARK WHITE MATTE PICKET
- a. CABINETS THROUGHOUT: SEA SALT PAINT
- b. CABINETS @ KITCHEN ISLAND: CELESTE PAINT

PAINT OPTIONS:
SW PURE WHITE 7005
SW DRIFT OF MIST 9166
SW AGREEABLE GRAY 7029

SIGNATURE - SEA SALT/CELESTE (WARM)



- A. EVP: ADURA MAX PRESERVATION / COLOR: ARTIFACT (INCLUDES LL BATH 3 FLOOR)
- B. KITCHEN COUNTERTOP: PENTAL TERRA SOL 3CM
- C. KITCHEN BACKSPLASH: RICE 3X8 RAKED NATURAL
- D. BATH COUNTERTOPS: SILESTONE MIAMI VENA 3CM W/ 4" SLAB SPLASH AT BATHS
- E. FLOOR TILE @ UL BATHS & LAUNDRY: LOUNGE 14 12X24 COSMOPOLITAN ULGN
- F. PRIMARY BATH WALL TILE: LOUNGE 14 12X24 COSMOPOLITAN ULGN
- G. SECONDARY BATH WALL TILE: CATCH 4X16 ICE GLOSS
- H. CARPET - PATTERNED: CLOSE KNIT DW285 / COLOR: FIELDCREST 6001
- C. KITCHEN BACKSPLASH: SPARK IVORY MATTE PICKET
- a. CABINETS THROUGHOUT: SEA SALT PAINT
- b. CABINETS @ KITCHEN ISLAND: CELESTE PAINT

PAINT OPTIONS :

- SW PURE WHITE 7005
- SW AESTHETIC WHITE 7035
- SW ACCESSIBLE BEIGE 7036

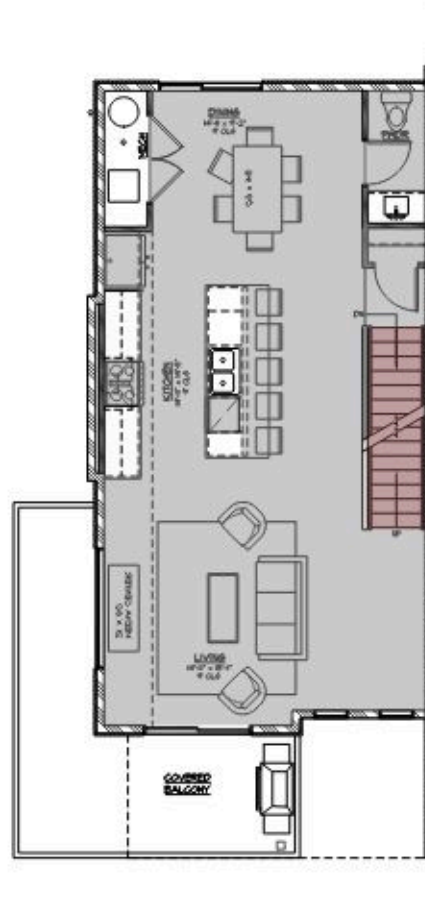
FLOOR BREAK

FLOOR BREAK (SUMMIT)

UPGRADED FLOORING



THIRD LEVEL



SECOND LEVEL



FIRST LEVEL

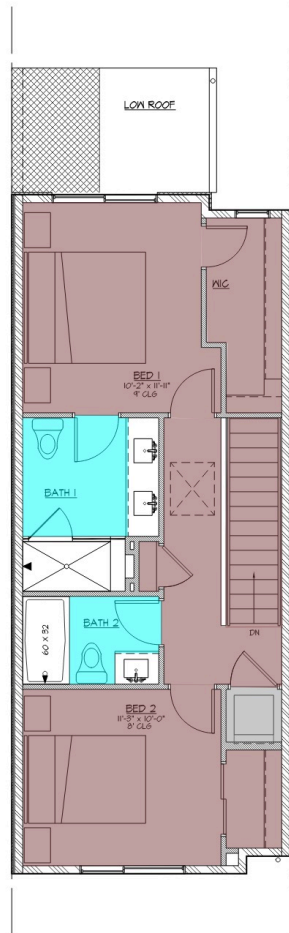
Description
Carpet
LVT
Tile

FLOOR BREAK

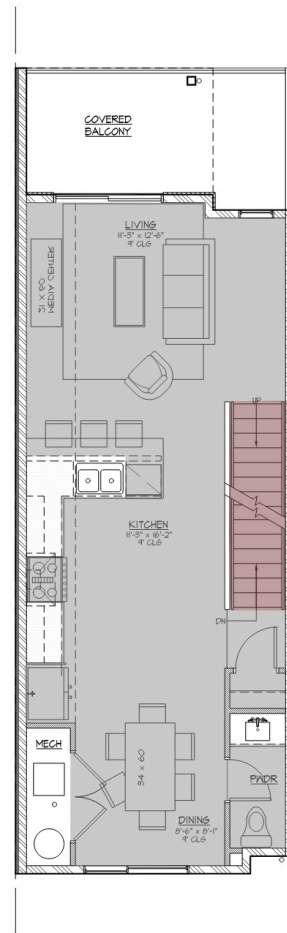
FLOOR BREAK (HAVEN)

UPGRADED FLOORING

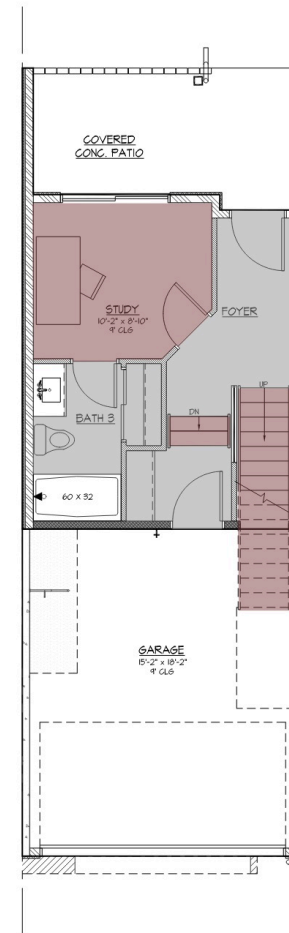
Description
Carpet
LVT
Tile



THIRD LEVEL



SECOND LEVEL



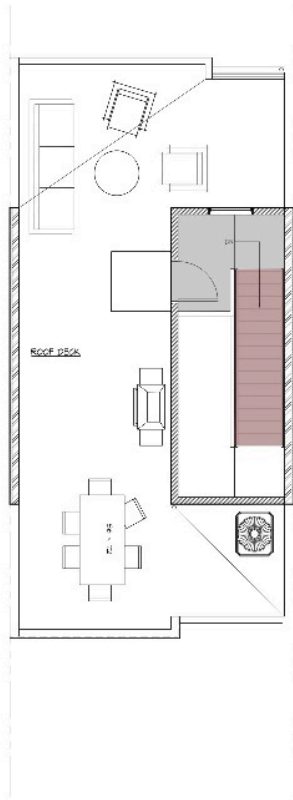
FIRST LEVEL

FLOOR BREAK

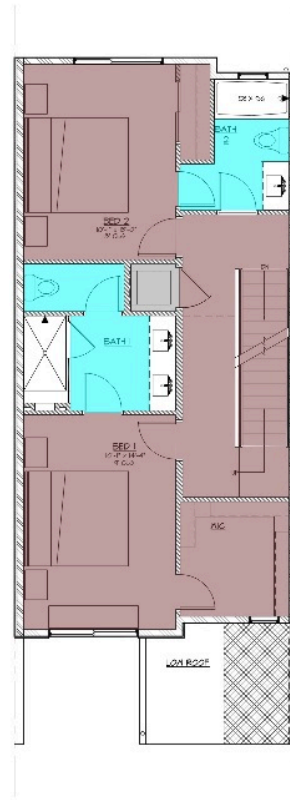
FLOOR BREAK (VUE)

UPGRADED FLOORING

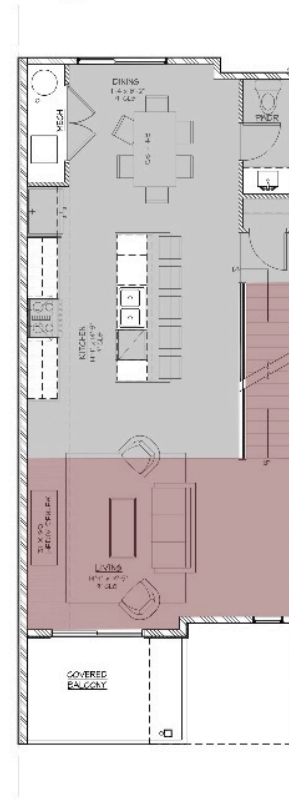
Description
 Carpet
 LVT
 Tile



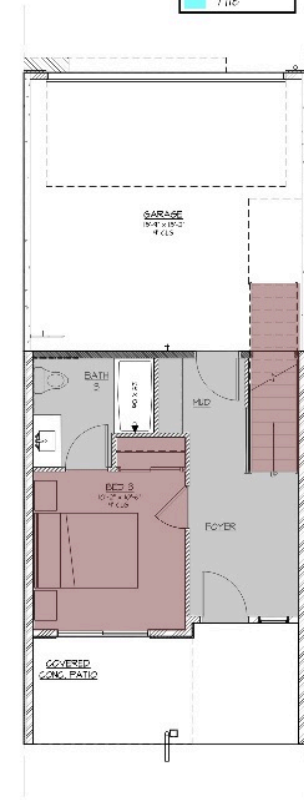
ROOF



THIRD LEVEL

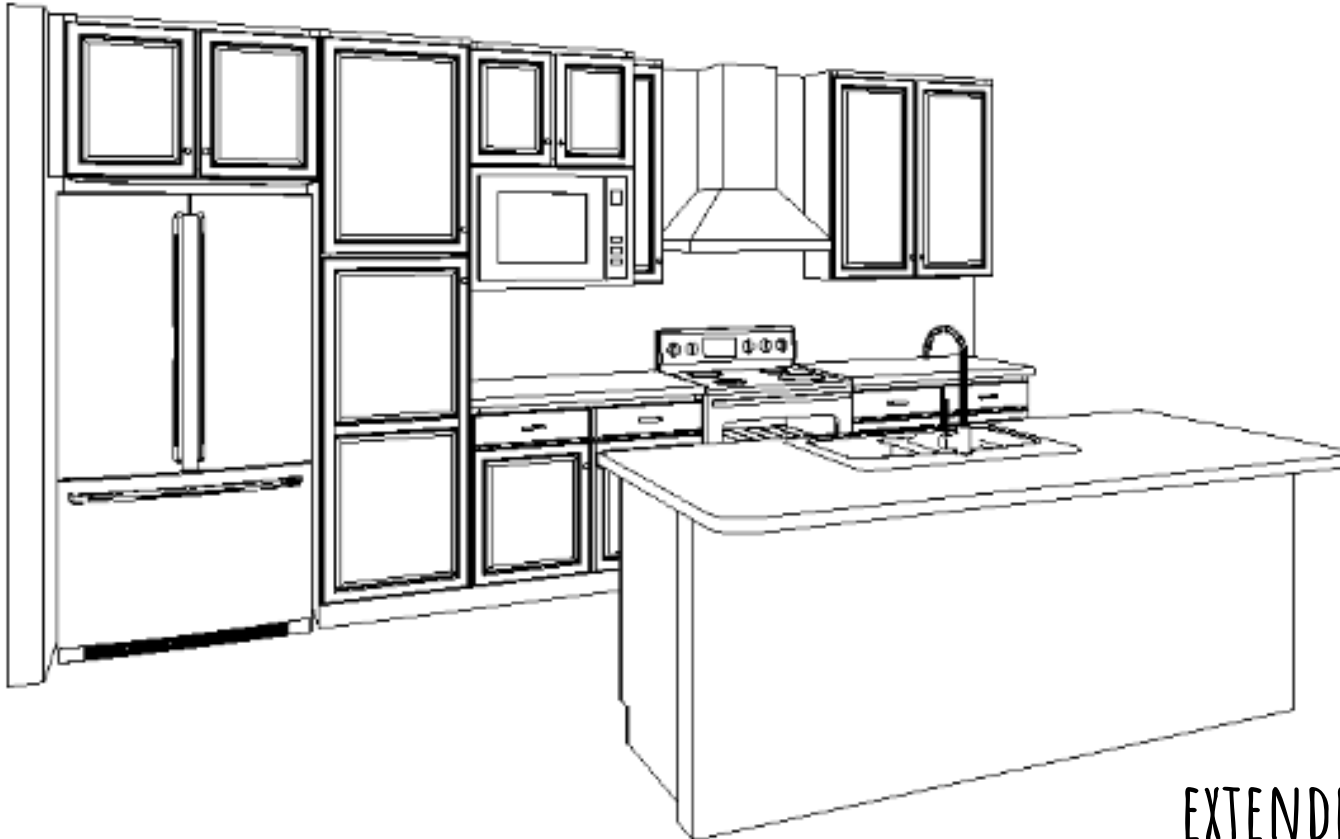


SECOND LEVEL

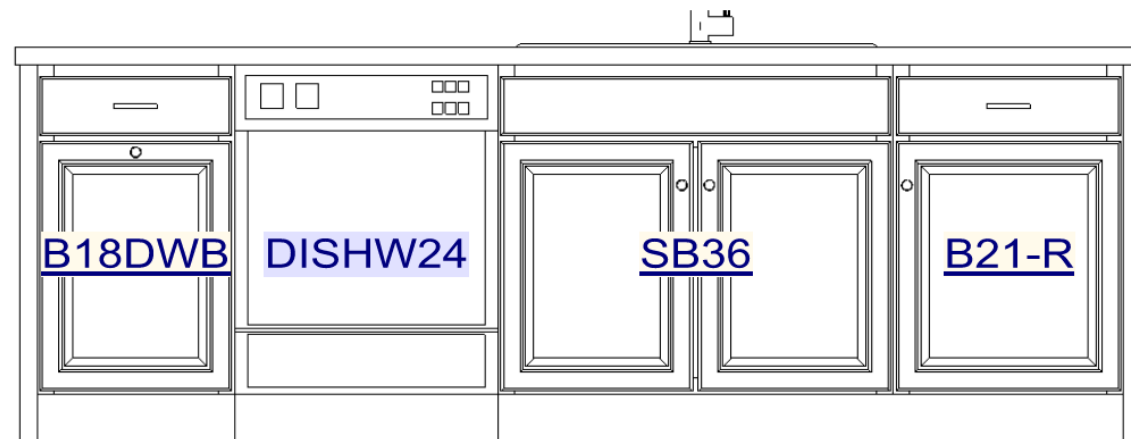


FIRST LEVEL

KITCHEN LAYOUT - GOURMET

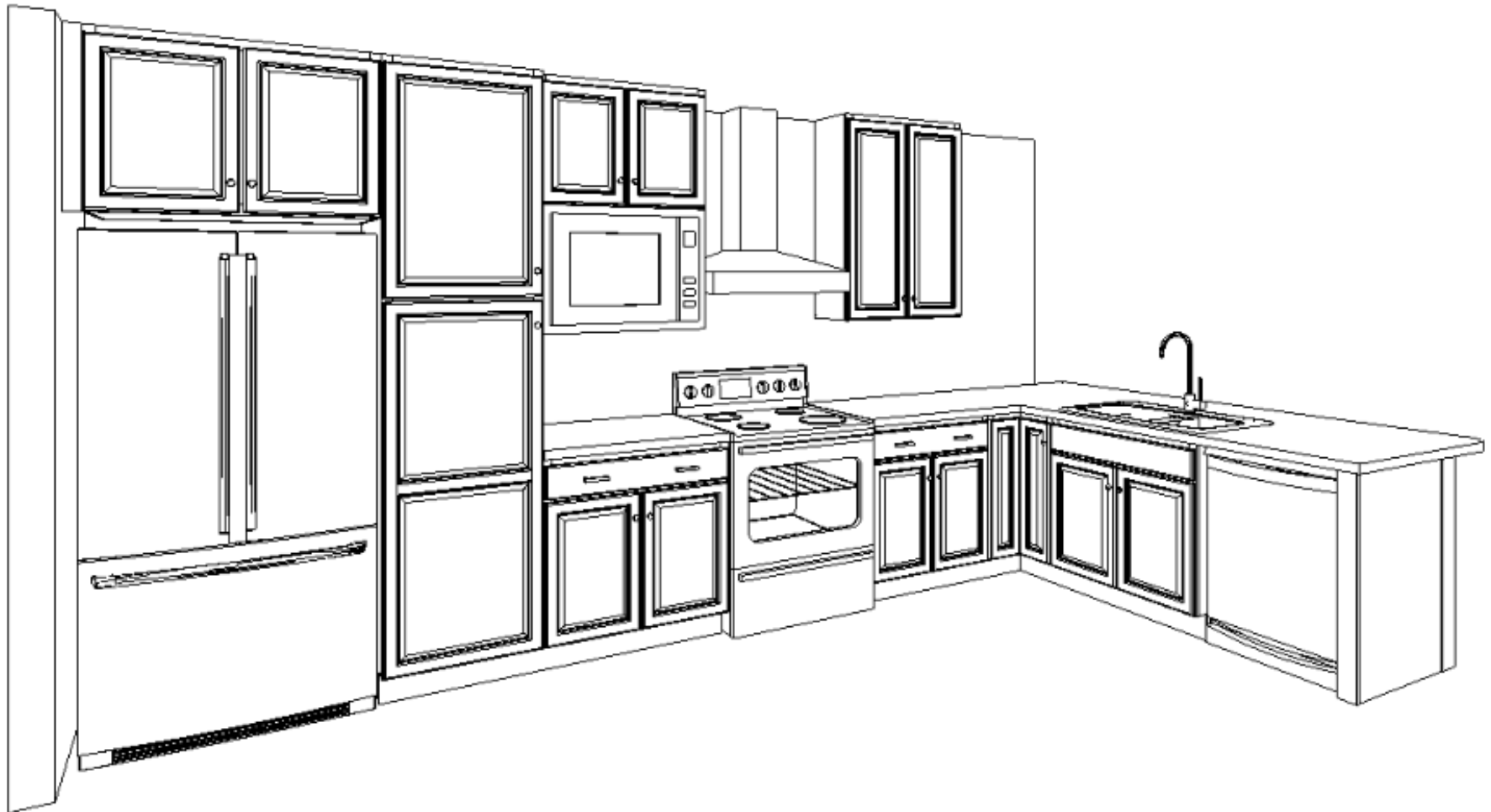


EXTENDED ISLAND LAYOUT



Summit & vue

KITCHEN LAYOUT - GOURMET

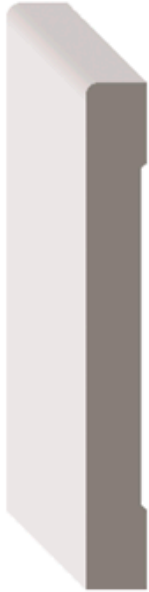


Haven

INTERIOR TRIM AND DOORS



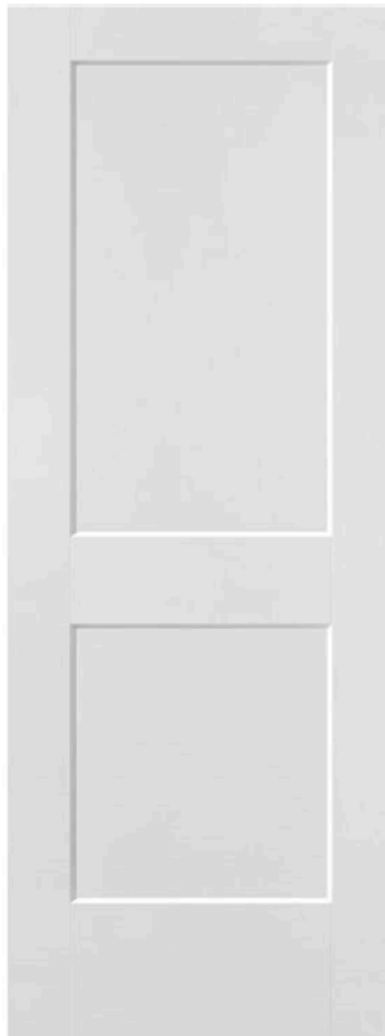
CASING



BASEBOARD

Logan

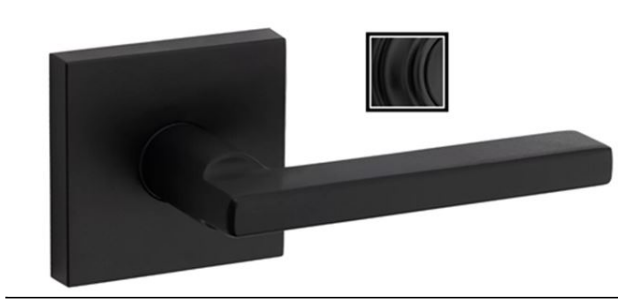
NEW
Logan[™]
HERITAGE[®]
SERIES



LOGAN, HERITAGE SERIES DOORS, HOLLOW
CORE (6'8''')

5-1/4" BASEBOARD WITH 3-1/4" CASING

INTERIOR DOOR HARDWARE



HALIFAX LEVER (SQUARE)

FINISH: IRON BLACK

EXTERIOR DOOR HARDWARE



SAN CLEMENTE HANDLESSET WITH HALIFAX
LEVER - DEADBOLT KEYED

ONE SIDE - FEATURING SMARTKEY

Kwikset

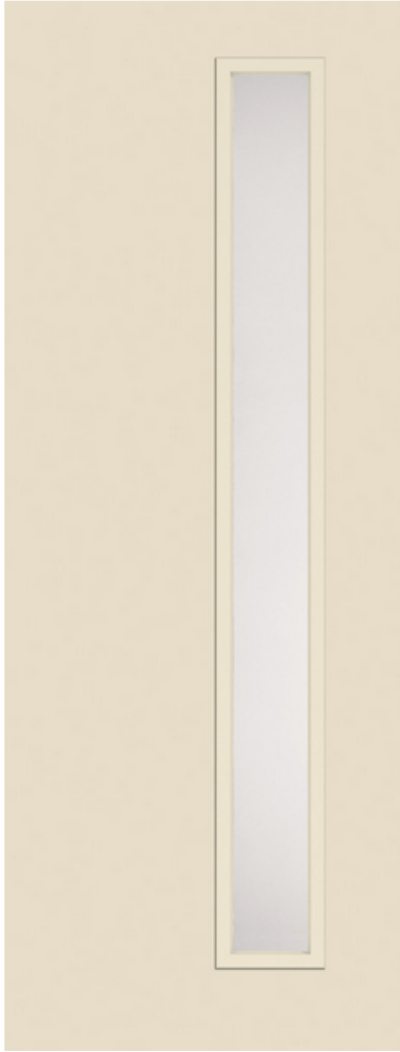
FINISH: IRON BLACK

LOW VOLTAGE PACKAGE - UPGRADE

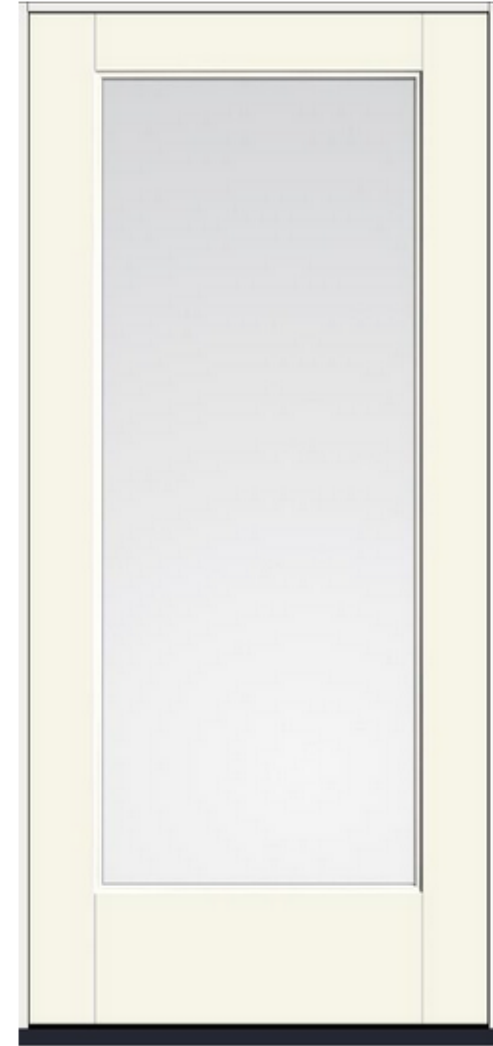


ECOBEE WIFI ENABLE PROGRAMMABLE
TOUCH SCREEN
THERMOSTAT

ENTRANCE DOOR AND ROOFTOP DOOR



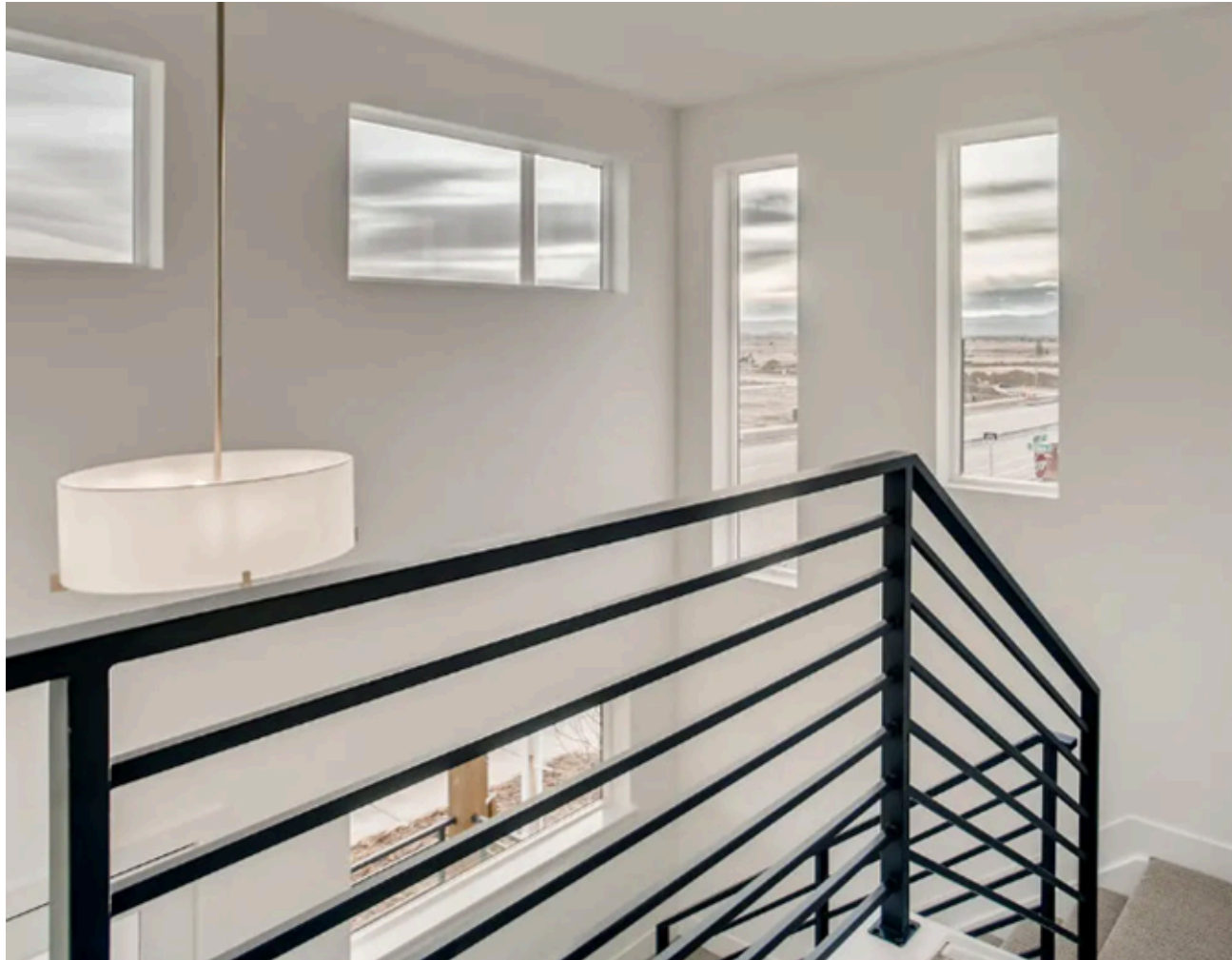
8'-0" x 3'-0" NARROW LIGHT DOOR
ENTRANCE



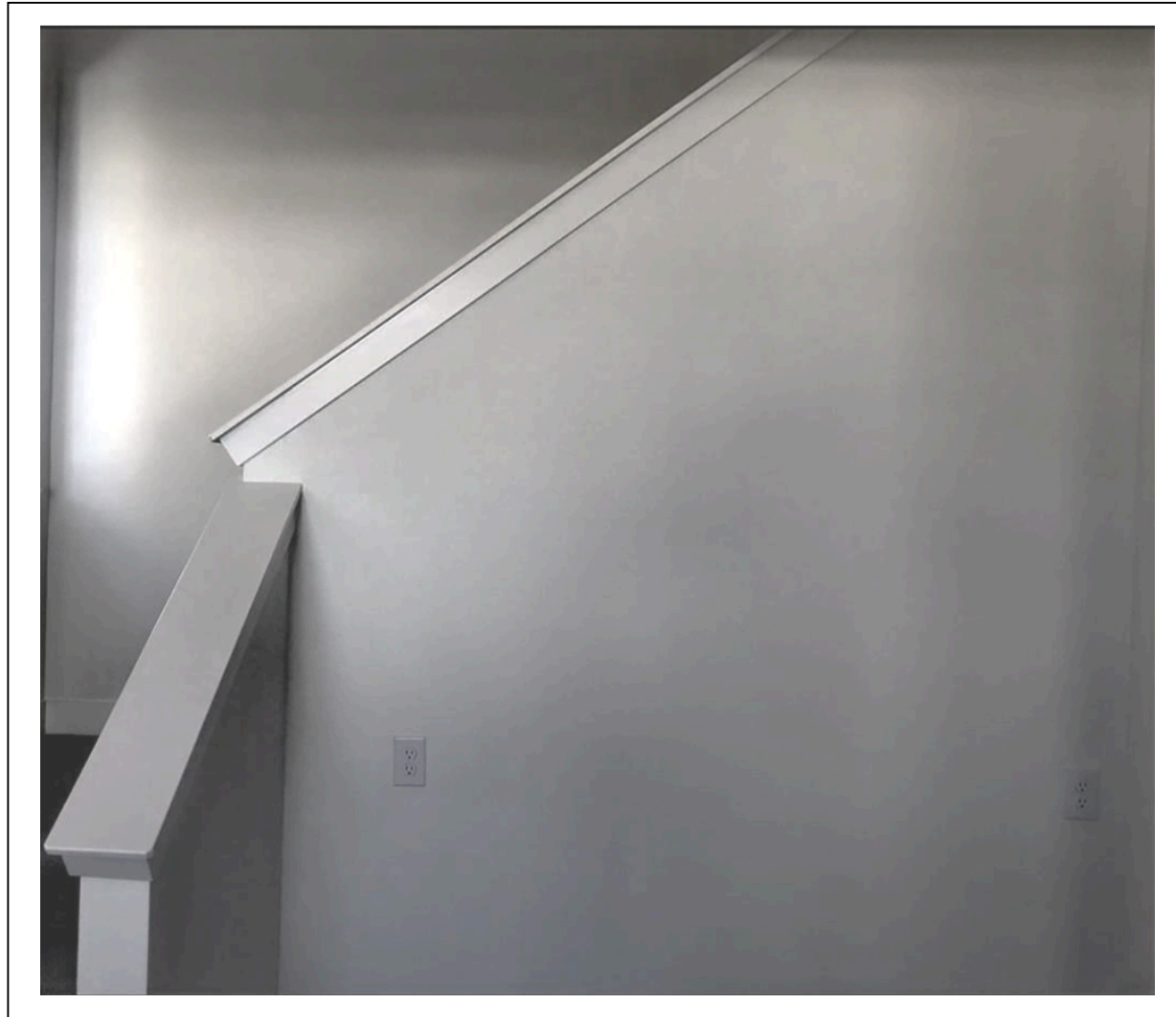
ROOFTOP



INTERIOR METAL RAILING - 1ST AND 2ND FLOOR



HALF WALL WITH MDF CAP - 3RD FLOOR



INTERIOR TRIM —BUILT IN BENCH/CUBBY



Color to match kitchen island
cabinets



with coat
hooks to match
hardware

BATH FINISH PACKAGES - CHAI LATTE AND JAVA



GENTA - MATTE BLACK



Moen Genta LX Single Handle Centerset Bathroom Faucet with Duralast Valve Technology and...
Model: **6702**



Moen Genta LX Shower Only Trim Package with 1.75 GPM Multi Function Shower Head
Model: **UT2472EPBL**



Moen Genta LX Tub and Shower Trim Package with 1.75 GPM Multi Function Shower...
Model: **UT2473EPBL**



Moen Genta LX Wall Mounted Pivoting Toilet Paper Holder
Model: **BH3808BL**



Moen Genta LX Single Robe Hook
Model: **BH3803BL**



Moen Genta LX Double Post Wall Mounted Towel Bar
Model: **BH3886BL**



Moen Genta LX 24\"/>

BATH FINISH PACKAGES - SEA SALT/CELESTE



GENTA- BRUSHED NICKEL



Moen Genta LX 1 GPM One-handle Bathroom Sink Faucet
Model: **6706B**



Moen Genta LX Shower Only Trim Package with 1.75 GPM Multi Function Shower Head
Model: **UT2472EPBN**



Moen Genta LX Tub and Shower Trim Package
Model: **UT2473NHBN**



Moen Genta LX Wall Mounted Pivoting Toilet Paper Holder
Model: **BH3808BN**



Moen Genta LX Single Robe Hook
Model: **BH3803BN**



Moen Genta LX Double Post Wall Mounted Towel Bar
Model: **BH3886BN**



Moen Genta LX 24" Towel Bar
Model: **BH3824BN**

PRIMARY SUITE BATH SHOWER DOOR

CHAI LATTE AND JAVA



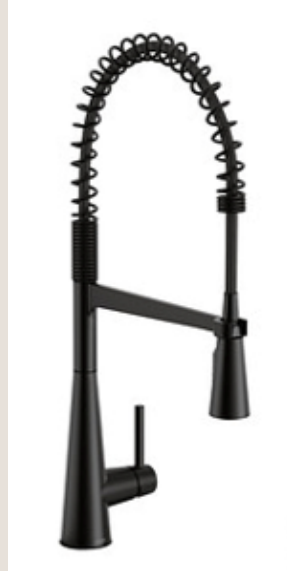
SEA SALT/CELESTE



* Euro-style tubular 6" push-pull handle mounted through glass

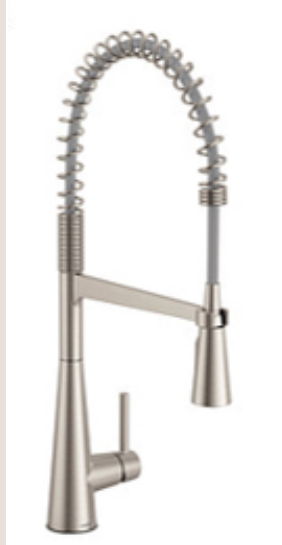
KITCHEN FAUCET

CHAI LATTE AND JAVA



MATTE BLACK
MODEL#: 5925BL

SEA SALT/CELESTE



SPOT RESIST STAINLESS
MODEL#: 5925SRS

EXTERIOR LIGHTING PACKAGES - STANDARD

GARAGE AND SIDE EXTERIOR



VENDOR #: P550103-031-30
VENDOR: PROGRESS LIGHTING
FINISH: MATTE BLACK
COLLECTION: 6IN CYL RND
WIDTH: 6
HEIGHT: 12
LENGTH: 8.94
OF BULBS: 1
WATTAGE: 32 W

PATIO EXTERIOR



VENDOR #: P5674-31/30K
VENDOR: PROGRESS LIGHTING
FINISH: BLACK
COLLECTION: LED CYLINDERS
WIDTH: 5
HEIGHT: 7.5
LENGTH: 8
OF BULBS: 1
WATTAGE: 16.9 W

INTERIOR LIGHTING PACKAGE - CHAI LATTE



BATHROOM



VENDOR #: 4451803-05
VENDOR: VISUAL COMFORT STUDIO
FINISH: CHROME
COLLECTION: NORMAN
WIDTH: 24.25
HEIGHT: 8.88
OF BULBS: 3
WATTAGE: 75 W

BEDROOM



VENDOR #: 1006F12-MB-BN-LED
VENDOR: Z-LITE
FINISH: MATTE BLACK / BRUSHED NICKEL
COLLECTION: ALGAR
WIDTH: 12
HEIGHT: 3
LENGTH: 12
OF BULBS: 1
WATTAGE: 24 W

KITCHEN ISLAND



PRODUCT ID: 0938150
VENDOR #: 3306-LP BLK-BLK
VENDOR: GOLDEN
FINISH: MATTE BLACK
COLLECTION: ORWELL
WIDTH: 10
HEIGHT: 14.5
LENGTH: 10
OF BULBS: 3
WATTAGE: 100 W
1EA 6``, 3EA 12``



DECORA SWITCHES

INTERIOR LIGHTING PACKAGE - JAVA



BATHROOM



VENDOR #: 52102BK
VENDOR: MAXIM
FINISH: BLACK
COLLECTION: RAIL
WIDTH: 24
HEIGHT: 4.75
LENGTH: 24
OF BULBS: 1
WATTAGE: 16 W

BEDROOM



VENDOR #: M60019NB
VENDOR: MERIDIAN
FINISH: NATURAL BRASS
COLLECTION: MFLUS
WIDTH: 13
HEIGHT: 4
LENGTH: 13
OF BULBS: 2
WATTAGE: 60 W

KITCHEN ISLAND



PRODUCT ID: 471533
VENDOR #: 3306-LP AB-AB
VENDOR: GOLDEN
FINISH: AGED BRASS
COLLECTION: ORWELL
WIDTH: 10
HEIGHT: 14.5
LENGTH: 10
OF BULBS: 3
WATTAGE: 100 W



DECORA SWITCHES

INTERIOR LIGHTING PACKAGE - SEA SALT/CELESTE



BATHROOM



VENDOR #: 4451803-05
VENDOR: VISUAL COMFORT STUDIO
FINISH: CHROME
COLLECTION: NORMAN
WIDTH: 24.25
HEIGHT: 8.88
OF BULBS: 3
WATTAGE: 75 W

BEDROOM



VENDOR #: 1006F12-MB-BN-LED
VENDOR: Z-LITE
FINISH: MATTE BLACK / BRUSHED NICKEL
COLLECTION: ALGAR
WIDTH: 12
HEIGHT: 3
LENGTH: 12
OF BULBS: 1
WATTAGE: 24 W

KITCHEN ISLAND



PRODUCT ID: 471531
VENDOR #: 3306-LP PW-PW
VENDOR: GOLDEN
FINISH: PEWTER
COLLECTION: ORWELL
WIDTH: 10
HEIGHT: 14.5
LENGTH: 10
OF BULBS: 3
WATTAGE: 100 W



DECORA SWITCHES

APPLIANCE PACKAGE

STAINLESS STEEL



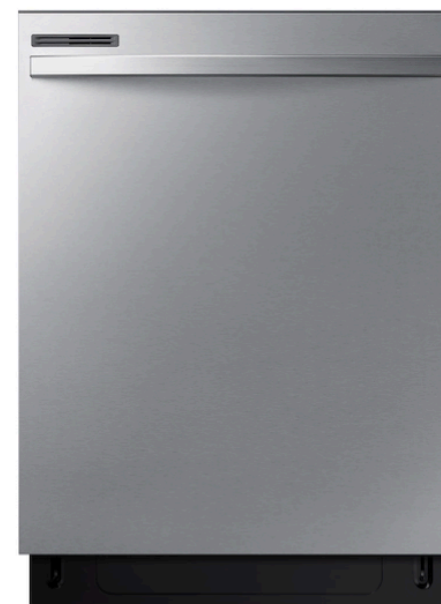
RANGE



MODEL#: NSE6DG8100SR

**SAMSUNG BESPOKE SMART SLIDE-IN ELECTRIC RANGE 6.3 CU. FT.
WITH PRECISION KNOBS**

DISHWASHER



MODEL#: DW80CG4021SR

**FINGERPRINT RESISTANT 53 DBA DISHWASHER WITH
ADJUSTABLE RACK**

MICROWAVE



MODEL#: MS19DG8500SR

SAMSUNG 1.9 CU. FT. COUNTERTOP MICROWAVE WITH SENSOR COOK

RANGE HOOD



MODEL#: NK30R5000W

SAMSUNG 30" RANGE HOOD

REFRIGERATOR



MODEL#: RF24BB6200

BESPOKE COUNTER DEPTH 3-DOOR FRENCH DOOR
REFRIGERATOR
(24 CU. FT.) WITH AUTOFill WATER PITCHER

SIGNATURE FEATURES

DUAL ICE MAKER WITH ICE BITES

ENJOY YOUR FAVORITE BEVERAGE WITH YOUR CHOICE OF ICE. SELECT FROM CUBED ICE OR ICE BITES THAT CHILL YOUR DRINK FASTER. MAKES UP TO 5.3 LBS PER DAY, STORES UP TO 7.3 LBS TOTAL.

AUTOFill WATER PITCHER

A BUILT-IN PITCHER THAT AUTOMATICALLY REFILLS WITH FILTERED WATER AND THE OPTION TO INFUSE WITH A FLAVOR OF YOUR CHOICE.

WATER HEATER



50 GALLON

GARAGE DOOR OPENER AND KEYPAD



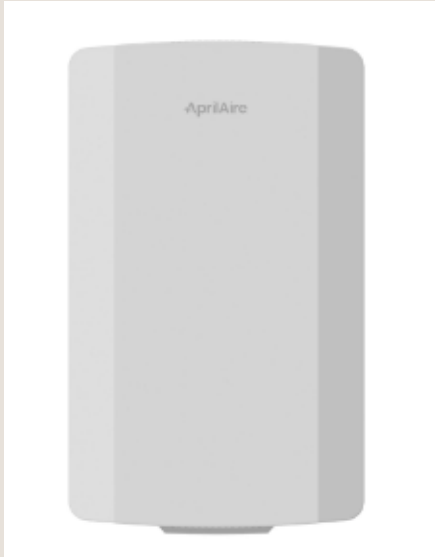
- Built-in Wi-Fi® allows for smartphone control with the myQ® app.
- Industrial-strength chain drive.
- Next generation garage technology: improved Wi-Fi connectivity and enhanced memory to support new myQ features and solutions.
- Integrated Bluetooth technology: reduces setup time and makes it even easier to connect to the myQ app, other myQ devices and smart home technology solutions.
- Works with Amazon Key: Enables convenient and secure In-Garage Delivery.
- myQ Diagnostics in the myQ app provides real-time insights for your garage door via the Health Report. Receive alerts and error codes in the app if an issue arises and connect with a professional for services if needed.

1/2 HP AC Chain Drive Wi-Fi® Garage Door Opener with Integrated Bluetooth Technology

MODEL#: 83650-267

ZONE COMFORT SYSTEM

3-ZONE TEMPERATURE CONTROL



MODEL#: 6403

INCREASES COMFORT AND REDUCE ENERGY COSTS BY MAINTAINING CONSISTENT TEMPERATURES AND CLIMATE THROUGHOUT THE HOUSE



Comfort

No more hot and cold spots.



Convenience

Adjust temperature from multiple rooms.



Energy Savings

Delivers conditioned air only when and where it's needed to maintain comfort.